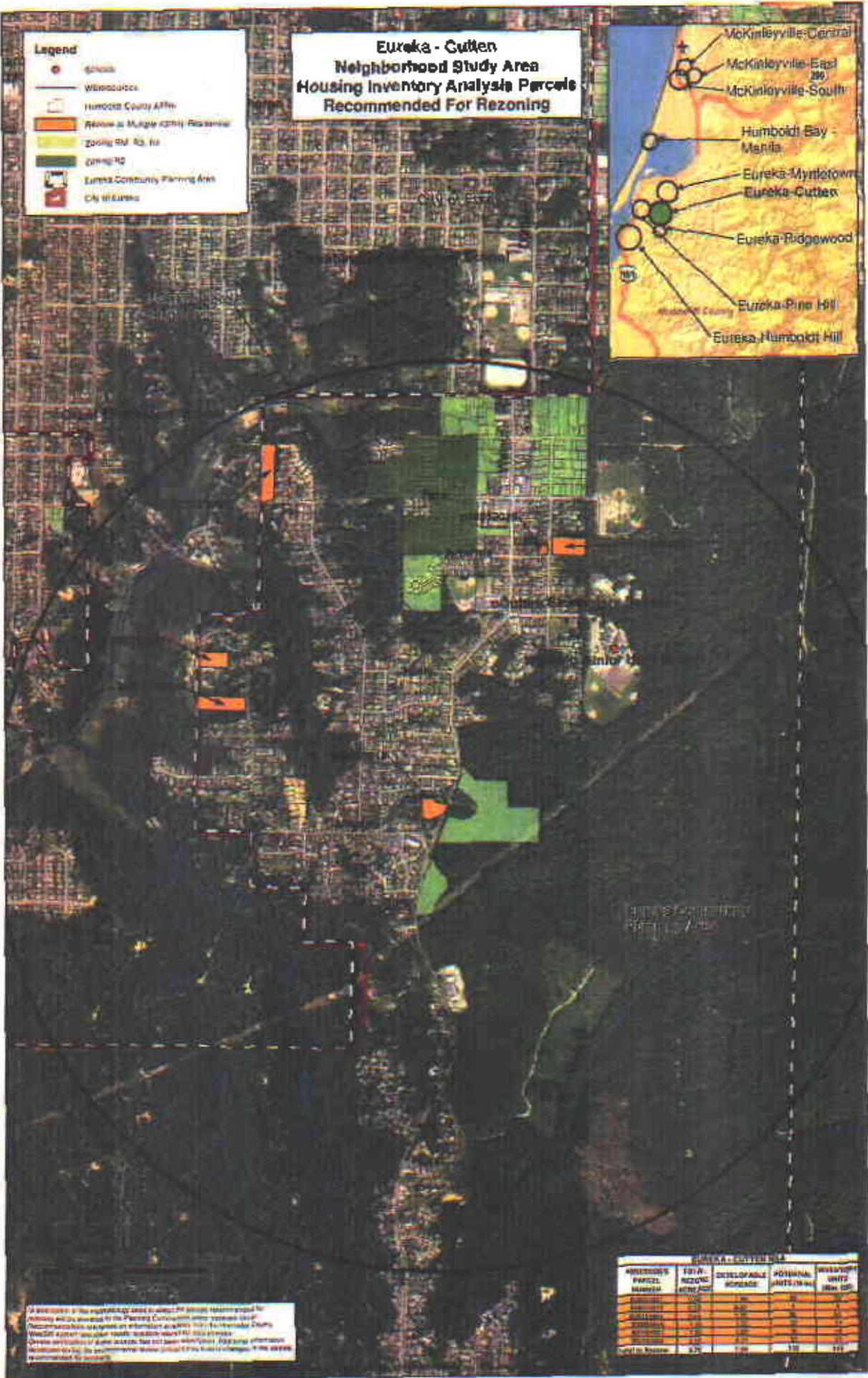


Legend

- Schools
- Waterbodies
- Humboldt County Affin
- Review or Multiple (2014) Rezone
- Zoning RM, RA, RA
- OTHER
- Eureka Community Planning Area
- City of Eureka

**Eureka - Cutten
Neighborhood Study Area
Housing Inventory Analysis Parcels
Recommended For Rezoning**

McKinleyville-Central
McKinleyville-East
McKinleyville-South
Humboldt Bay -
Marina
Eureka-Myrtlewood
Eureka-Cutten
Eureka-Ridgewood
Eureka-Pine Hill
Eureka-Humboldt Hill



All information in this report/analysis was prepared for the City of Eureka and is intended for the City of Eureka's use only. It is not to be used for any other purpose. The City of Eureka is not responsible for any errors or omissions in this report/analysis. The City of Eureka is not responsible for any actions taken based on this report/analysis. The City of Eureka is not responsible for any damages or losses resulting from the use of this report/analysis. The City of Eureka is not responsible for any legal actions taken against it based on this report/analysis.

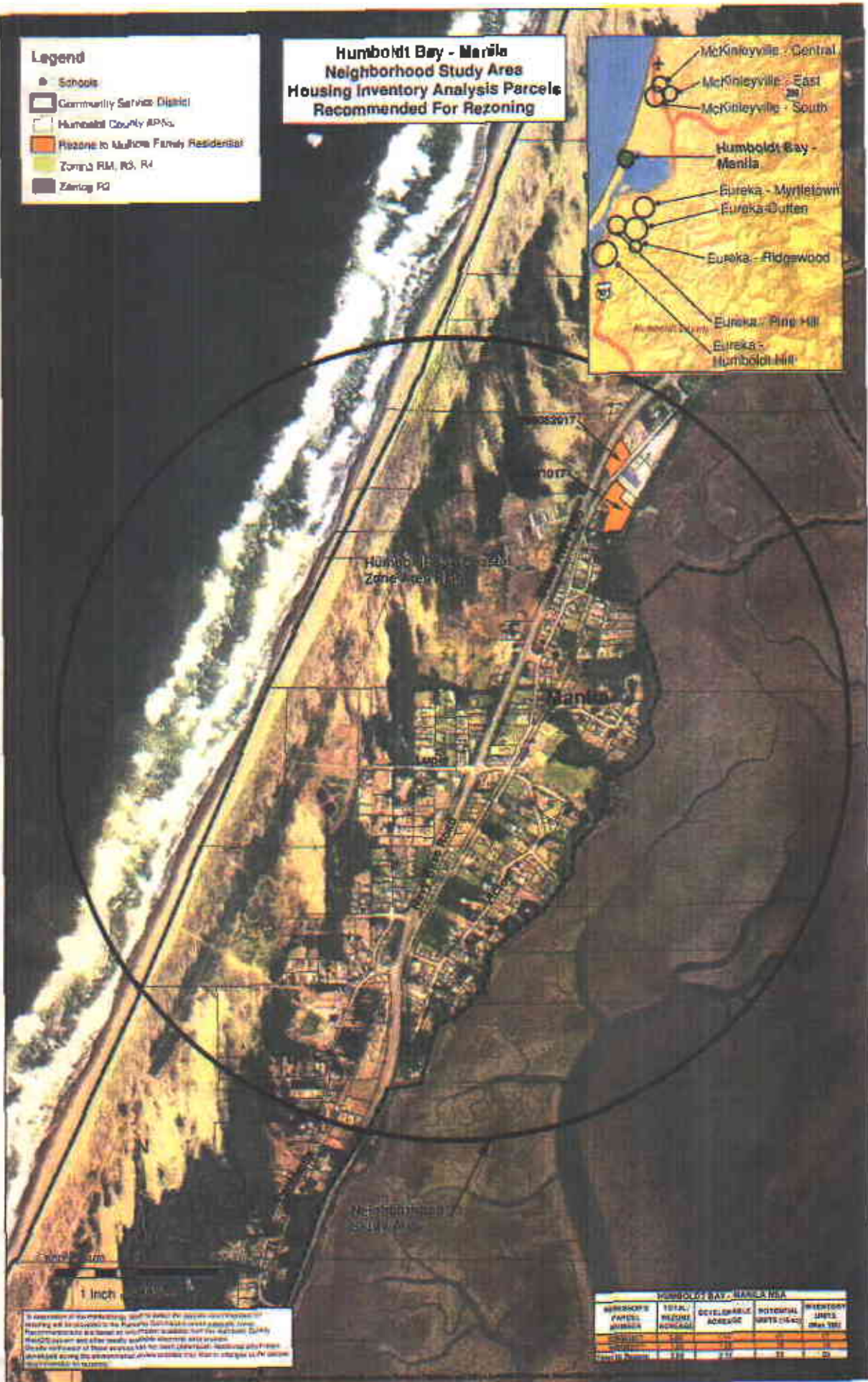
EUREKA - CUTTEN SIA

ANALYSIS PARCEL NUMBER	TOTL. REZONE (sq. ft.)	DEVELOPABLE ACREAGE	POTENTIAL UNITS (MAX)	UNITS/ACRE
001	1,200	0.02	1	50
002	1,200	0.02	1	50
003	1,200	0.02	1	50
004	1,200	0.02	1	50
005	1,200	0.02	1	50
006	1,200	0.02	1	50
007	1,200	0.02	1	50
008	1,200	0.02	1	50
009	1,200	0.02	1	50
010	1,200	0.02	1	50
011	1,200	0.02	1	50
012	1,200	0.02	1	50
013	1,200	0.02	1	50
014	1,200	0.02	1	50
015	1,200	0.02	1	50
016	1,200	0.02	1	50
017	1,200	0.02	1	50
018	1,200	0.02	1	50
019	1,200	0.02	1	50
020	1,200	0.02	1	50
021	1,200	0.02	1	50
022	1,200	0.02	1	50
023	1,200	0.02	1	50
024	1,200	0.02	1	50
025	1,200	0.02	1	50
026	1,200	0.02	1	50
027	1,200	0.02	1	50
028	1,200	0.02	1	50
029	1,200	0.02	1	50
030	1,200	0.02	1	50
031	1,200	0.02	1	50
032	1,200	0.02	1	50
033	1,200	0.02	1	50
034	1,200	0.02	1	50
035	1,200	0.02	1	50
036	1,200	0.02	1	50
037	1,200	0.02	1	50
038	1,200	0.02	1	50
039	1,200	0.02	1	50
040	1,200	0.02	1	50
041	1,200	0.02	1	50
042	1,200	0.02	1	50
043	1,200	0.02	1	50
044	1,200	0.02	1	50
045	1,200	0.02	1	50
046	1,200	0.02	1	50
047	1,200	0.02	1	50
048	1,200	0.02	1	50
049	1,200	0.02	1	50
050	1,200	0.02	1	50
051	1,200	0.02	1	50
052	1,200	0.02	1	50
053	1,200	0.02	1	50
054	1,200	0.02	1	50
055	1,200	0.02	1	50
056	1,200	0.02	1	50
057	1,200	0.02	1	50
058	1,200	0.02	1	50
059	1,200	0.02	1	50
060	1,200	0.02	1	50
061	1,200	0.02	1	50
062	1,200	0.02	1	50
063	1,200	0.02	1	50
064	1,200	0.02	1	50
065	1,200	0.02	1	50
066	1,200	0.02	1	50
067	1,200	0.02	1	50
068	1,200	0.02	1	50
069	1,200	0.02	1	50
070	1,200	0.02	1	50
071	1,200	0.02	1	50
072	1,200	0.02	1	50
073	1,200	0.02	1	50
074	1,200	0.02	1	50
075	1,200	0.02	1	50
076	1,200	0.02	1	50
077	1,200	0.02	1	50
078	1,200	0.02	1	50
079	1,200	0.02	1	50
080	1,200	0.02	1	50
081	1,200	0.02	1	50
082	1,200	0.02	1	50
083	1,200	0.02	1	50
084	1,200	0.02	1	50
085	1,200	0.02	1	50
086	1,200	0.02	1	50
087	1,200	0.02	1	50
088	1,200	0.02	1	50
089	1,200	0.02	1	50
090	1,200	0.02	1	50
091	1,200	0.02	1	50
092	1,200	0.02	1	50
093	1,200	0.02	1	50
094	1,200	0.02	1	50
095	1,200	0.02	1	50
096	1,200	0.02	1	50
097	1,200	0.02	1	50
098	1,200	0.02	1	50
099	1,200	0.02	1	50
100	1,200	0.02	1	50
101	1,200	0.02	1	50
102	1,200	0.02	1	50
103	1,200	0.02	1	50
104	1,200	0.02	1	50
105	1,200	0.02	1	50
106	1,200	0.02	1	50
107	1,200	0.02	1	50
108	1,200	0.02	1	50
109	1,200	0.02	1	50
110	1,200	0.02	1	50
111	1,200	0.02	1	50
112	1,200	0.02	1	50
113	1,200	0.02	1	50
114	1,200	0.02	1	50
115	1,200	0.02	1	50
116	1,200	0.02	1	50
117	1,200	0.02	1	50
118	1,200	0.02	1	50
119	1,200	0.02	1	50
120	1,200	0.02	1	50
121	1,200	0.02	1	50
122	1,200	0.02	1	50
123	1,200	0.02	1	50
124	1,200	0.02	1	50
125	1,200	0.02	1	50
126	1,200	0.02	1	50
127	1,200	0.02	1	50
128	1,200	0.02	1	50
129	1,200	0.02	1	50
130	1,200	0.02	1	50
131	1,200	0.02	1	50
132	1,200	0.02	1	50
133	1,200	0.02	1	50
134	1,200	0.02	1	50
135	1,200	0.02	1	50
136	1,200	0.02	1	50
137	1,200	0.02	1	50
138	1,200	0.02	1	50
139	1,200	0.02	1	50
140	1,200	0.02	1	50
141	1,200	0.02	1	50
142	1,200	0.02	1	50
143	1,200	0.02	1	50
144	1,200	0.02	1	50
145	1,200	0.02	1	50
146	1,200	0.02	1	50
147	1,200	0.02	1	50
148	1,200	0.02	1	50
149	1,200	0.02	1	50
150	1,200	0.02	1	50
151	1,200	0.02	1	50
152	1,200	0.02	1	50
153	1,200	0.02	1	50
154	1,200	0.02	1	50
155	1,200	0.02	1	50
156	1,200	0.02	1	50
157	1,200	0.02	1	50
158	1,200	0.02	1	50
159	1,200	0.02	1	50
160	1,200	0.02	1	50
161	1,200	0.02	1	50
162	1,200	0.02	1	50
163	1,200	0.02	1	50
164	1,200	0.02	1	50
165	1,200	0.02	1	50
166	1,200	0.02	1	50
167	1,200	0.02	1	50
168	1,200	0.02	1	50
169	1,200	0.02	1	50
170	1,200	0.02	1	50
171	1,200	0.02	1	50
172	1,200	0.02	1	50
173	1,200	0.02	1	50
174	1,200	0.02	1	50
175	1,200	0.02	1	50
176	1,200	0.02	1	50
177	1,200	0.02	1	50
178	1,200	0.02	1	50
179	1,200	0.02	1	50
180	1,200	0.02	1	50
181	1,200	0.02	1	50
182	1,200	0.02	1	50
183	1,200	0.02	1	50
184	1,200	0.02	1	50
185	1,200	0.02	1	50
186	1,200	0.02	1	50
187	1,200	0.02	1	50
188	1,200	0.02	1	50
189	1,200	0.02	1	50
190	1,200	0.02	1	50
191	1,200	0.02	1	50
192	1,200	0.02	1	50
193	1,200	0.02	1	50
194	1,200	0.02	1	50
195	1,200	0.02	1	50
196	1,200	0.02	1	50
197	1,200	0.02	1	50
198	1,200	0.02	1	50
199	1,200	0.02	1	50
200	1,200	0.02	1	50
201	1,200	0.02	1	50
202	1,200	0.02	1	50
203	1,200	0.02	1	50
204	1,200	0.02	1	50
205	1,200	0.02	1	50
206	1,200	0.02	1	50
207	1,200	0.02	1	50
208	1,200	0.02	1	50
209	1,200	0.02	1	50
210	1,200	0.02	1	50
211	1,200	0.02	1	50
212	1,200	0.02	1	50
213	1,200	0.02	1	50
214	1,200	0.02	1	50
215	1,200	0.02	1	50
216	1,200	0.02	1	50
217	1,200	0.02	1	50
218	1,200	0.02	1	50
219	1,200	0.02	1	50
220	1,200	0.02	1	50
221	1,200	0.02	1	50
222	1,200	0.02	1	50
223	1,200	0.02	1	50

Legend

- Schools
- Community Service District
- Humboldt County APNs
- Rezone to Medium Density Residential
- Zone RM, RS, R4
- Zoning PD

**Humboldt Bay - Manila
Neighborhood Study Area
Housing Inventory Analysis Parcels
Recommended For Rezoning**



In accordance with the provisions of the California Public Access Law, the information contained herein is being made available to the public. Humboldt County is not responsible for any errors or omissions. Humboldt County is not responsible for any damages or liabilities arising from the use of this information. Humboldt County is not responsible for any damages or liabilities arising from the use of this information. Humboldt County is not responsible for any damages or liabilities arising from the use of this information.

HUMBOLDT BAY - MANILA HIA				
PARCEL NUMBER	TOTAL ACRES	DEVELOPABLE ACRES	POTENTIAL UNITS (1640 S.F./UNIT)	INVENTORY UNITS (2014)
1	1.0	0.5	10	0
2	1.0	0.5	10	0
3	1.0	0.5	10	0
4	1.0	0.5	10	0
5	1.0	0.5	10	0
6	1.0	0.5	10	0
7	1.0	0.5	10	0
8	1.0	0.5	10	0
9	1.0	0.5	10	0
10	1.0	0.5	10	0
11	1.0	0.5	10	0
12	1.0	0.5	10	0
13	1.0	0.5	10	0
14	1.0	0.5	10	0
15	1.0	0.5	10	0
16	1.0	0.5	10	0
17	1.0	0.5	10	0
18	1.0	0.5	10	0
19	1.0	0.5	10	0
20	1.0	0.5	10	0
21	1.0	0.5	10	0
22	1.0	0.5	10	0
23	1.0	0.5	10	0
24	1.0	0.5	10	0
25	1.0	0.5	10	0
26	1.0	0.5	10	0
27	1.0	0.5	10	0
28	1.0	0.5	10	0
29	1.0	0.5	10	0
30	1.0	0.5	10	0
31	1.0	0.5	10	0
32	1.0	0.5	10	0
33	1.0	0.5	10	0
34	1.0	0.5	10	0
35	1.0	0.5	10	0
36	1.0	0.5	10	0
37	1.0	0.5	10	0
38	1.0	0.5	10	0
39	1.0	0.5	10	0
40	1.0	0.5	10	0
41	1.0	0.5	10	0
42	1.0	0.5	10	0
43	1.0	0.5	10	0
44	1.0	0.5	10	0
45	1.0	0.5	10	0
46	1.0	0.5	10	0
47	1.0	0.5	10	0
48	1.0	0.5	10	0
49	1.0	0.5	10	0
50	1.0	0.5	10	0

Legend

- Schools
- Watercourse
- Community Service District
- ▭ Humboldt County APNs
- 🏠 Reserves to Multiple Family Residential
- 🟡 Zoning RM, R3, A4
- 🟤 Zoning I-2

**Hydesville Parcel
Housing Inventory Analysis Parcels
Recommended For Rezoning**



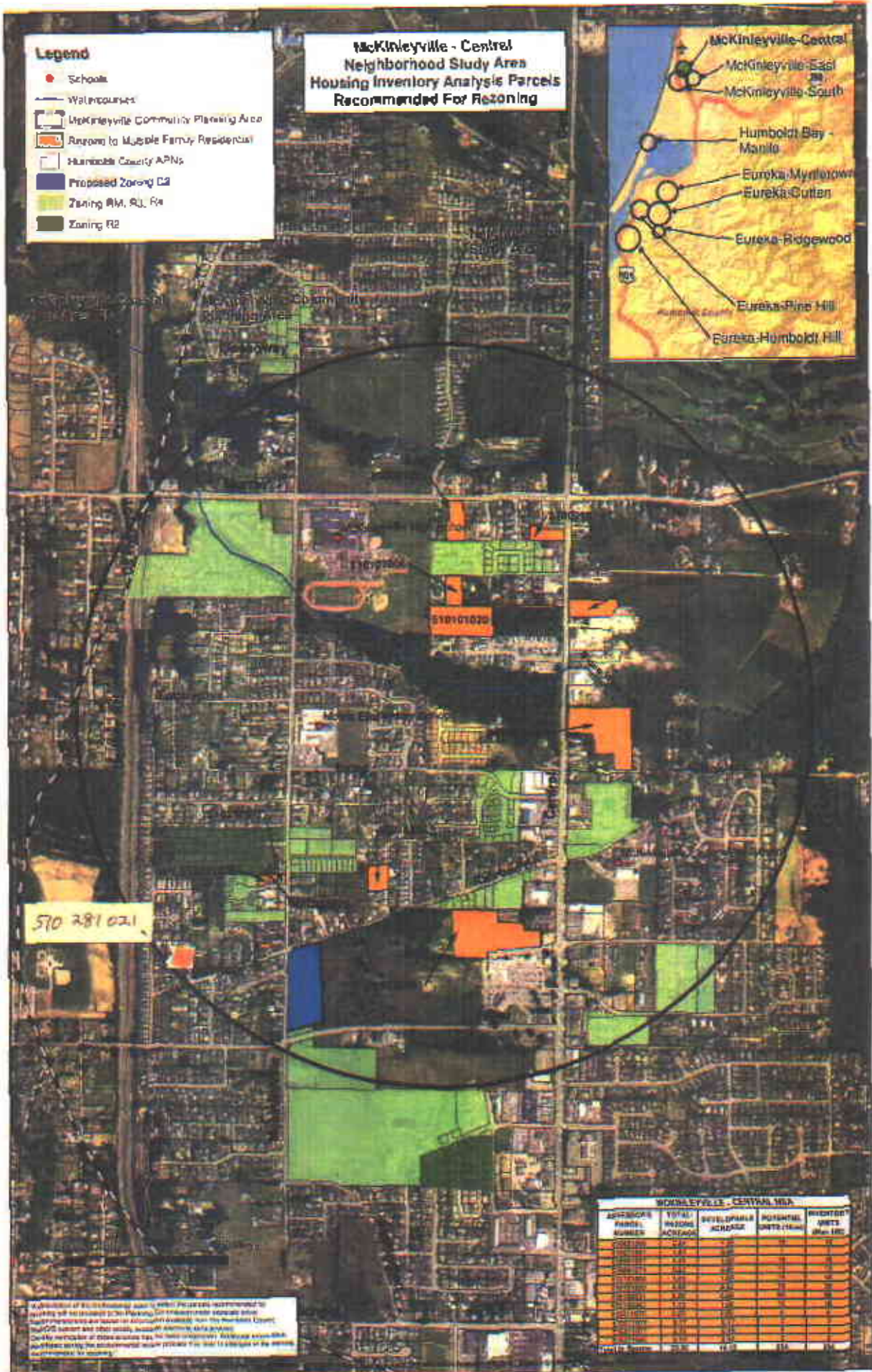
Information on this package was compiled from various sources. The accuracy of the information is not guaranteed. The information is provided for informational purposes only. The information is not intended to be used for any other purpose. The information is not intended to be used for any other purpose. The information is not intended to be used for any other purpose.

APN	TOTAL PARCELS	DEVELOPABLE ACRES	POTENTIAL UNITS (RM)	POTENTIAL UNITS (R3)
001	1	0.1	1	1
002	1	0.1	1	1
003	1	0.1	1	1
004	1	0.1	1	1
005	1	0.1	1	1
006	1	0.1	1	1
007	1	0.1	1	1
008	1	0.1	1	1
009	1	0.1	1	1
010	1	0.1	1	1
011	1	0.1	1	1
012	1	0.1	1	1
013	1	0.1	1	1
014	1	0.1	1	1
015	1	0.1	1	1
016	1	0.1	1	1
017	1	0.1	1	1
018	1	0.1	1	1
019	1	0.1	1	1
020	1	0.1	1	1
021	1	0.1	1	1
022	1	0.1	1	1
023	1	0.1	1	1
024	1	0.1	1	1
025	1	0.1	1	1
026	1	0.1	1	1
027	1	0.1	1	1
028	1	0.1	1	1
029	1	0.1	1	1
030	1	0.1	1	1
031	1	0.1	1	1
032	1	0.1	1	1
033	1	0.1	1	1
034	1	0.1	1	1
035	1	0.1	1	1
036	1	0.1	1	1
037	1	0.1	1	1
038	1	0.1	1	1
039	1	0.1	1	1
040	1	0.1	1	1
041	1	0.1	1	1
042	1	0.1	1	1
043	1	0.1	1	1
044	1	0.1	1	1
045	1	0.1	1	1
046	1	0.1	1	1
047	1	0.1	1	1
048	1	0.1	1	1
049	1	0.1	1	1
050	1	0.1	1	1
051	1	0.1	1	1
052	1	0.1	1	1
053	1	0.1	1	1
054	1	0.1	1	1
055	1	0.1	1	1
056	1	0.1	1	1
057	1	0.1	1	1
058	1	0.1	1	1
059	1	0.1	1	1
060	1	0.1	1	1
061	1	0.1	1	1
062	1	0.1	1	1
063	1	0.1	1	1
064	1	0.1	1	1
065	1	0.1	1	1
066	1	0.1	1	1
067	1	0.1	1	1
068	1	0.1	1	1
069	1	0.1	1	1
070	1	0.1	1	1
071	1	0.1	1	1
072	1	0.1	1	1
073	1	0.1	1	1
074	1	0.1	1	1
075	1	0.1	1	1
076	1	0.1	1	1
077	1	0.1	1	1
078	1	0.1	1	1
079	1	0.1	1	1
080	1	0.1	1	1
081	1	0.1	1	1
082	1	0.1	1	1
083	1	0.1	1	1
084	1	0.1	1	1
085	1	0.1	1	1
086	1	0.1	1	1
087	1	0.1	1	1
088	1	0.1	1	1
089	1	0.1	1	1
090	1	0.1	1	1
091	1	0.1	1	1
092	1	0.1	1	1
093	1	0.1	1	1
094	1	0.1	1	1
095	1	0.1	1	1
096	1	0.1	1	1
097	1	0.1	1	1
098	1	0.1	1	1
099	1	0.1	1	1
100	1	0.1	1	1

Legend

- Schools
- Watercourses
- McKinleyville Community Planning Area
- Allowed to Multiple Family Residential
- Humboldt County APNs
- Proposed Zoning C2
- Zoning RM, R3, R4
- Zoning R2

**McKinleyville - Central
Neighborhood Study Area
Housing Inventory Analysis Parcels
Recommended For Rezoning**



510 281 021

518101020

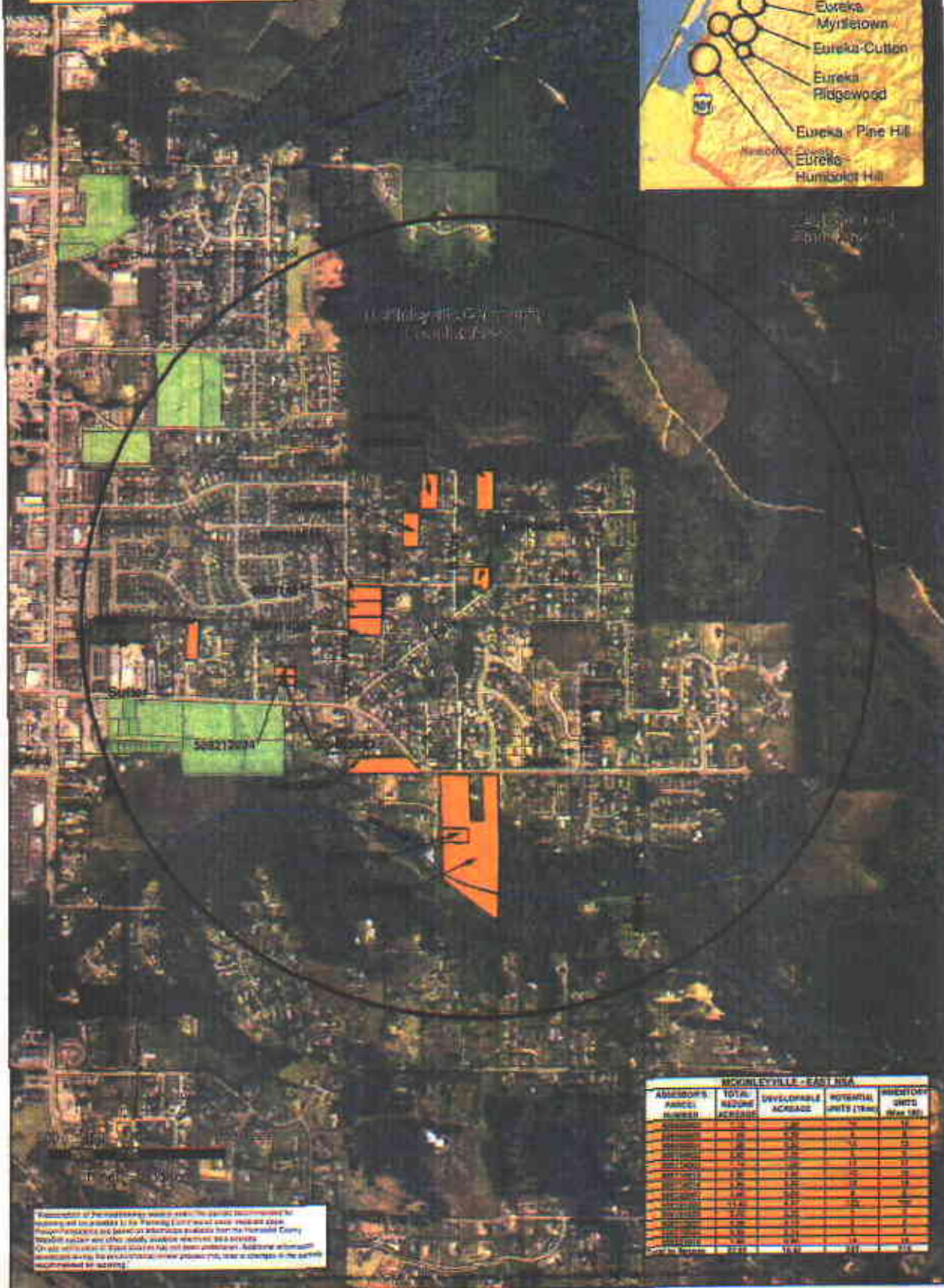
McKINLEYVILLE - CENTRAL MSA

AGRICULTURAL PARCEL NUMBER	TOTAL INDIAN ACRES	DEVELOPABLE ACRES	POTENTIAL UNITS/YEAR	INVENTED UNITS (Jan 1992)
001	1.2	0.8	10	5
002	1.5	1.0	12	6
003	1.8	1.2	15	7
004	2.1	1.4	18	8
005	2.4	1.6	20	9
006	2.7	1.8	22	10
007	3.0	2.0	24	11
008	3.3	2.2	26	12
009	3.6	2.4	28	13
010	3.9	2.6	30	14
011	4.2	2.8	32	15
012	4.5	3.0	34	16
013	4.8	3.2	36	17
014	5.1	3.4	38	18
015	5.4	3.6	40	19
016	5.7	3.8	42	20
017	6.0	4.0	44	21
018	6.3	4.2	46	22
019	6.6	4.4	48	23
020	6.9	4.6	50	24
021	7.2	4.8	52	25
022	7.5	5.0	54	26
023	7.8	5.2	56	27
024	8.1	5.4	58	28
025	8.4	5.6	60	29
026	8.7	5.8	62	30
027	9.0	6.0	64	31
028	9.3	6.2	66	32
029	9.6	6.4	68	33
030	9.9	6.6	70	34
031	10.2	6.8	72	35
032	10.5	7.0	74	36
033	10.8	7.2	76	37
034	11.1	7.4	78	38
035	11.4	7.6	80	39
036	11.7	7.8	82	40
037	12.0	8.0	84	41
038	12.3	8.2	86	42
039	12.6	8.4	88	43
040	12.9	8.6	90	44
041	13.2	8.8	92	45
042	13.5	9.0	94	46
043	13.8	9.2	96	47
044	14.1	9.4	98	48
045	14.4	9.6	100	49
046	14.7	9.8	102	50
047	15.0	10.0	104	51
048	15.3	10.2	106	52
049	15.6	10.4	108	53
050	15.9	10.6	110	54
051	16.2	10.8	112	55
052	16.5	11.0	114	56
053	16.8	11.2	116	57
054	17.1	11.4	118	58
055	17.4	11.6	120	59
056	17.7	11.8	122	60
057	18.0	12.0	124	61
058	18.3	12.2	126	62
059	18.6	12.4	128	63
060	18.9	12.6	130	64
061	19.2	12.8	132	65
062	19.5	13.0	134	66
063	19.8	13.2	136	67
064	20.1	13.4	138	68
065	20.4	13.6	140	69
066	20.7	13.8	142	70
067	21.0	14.0	144	71
068	21.3	14.2	146	72
069	21.6	14.4	148	73
070	21.9	14.6	150	74
071	22.2	14.8	152	75
072	22.5	15.0	154	76
073	22.8	15.2	156	77
074	23.1	15.4	158	78
075	23.4	15.6	160	79
076	23.7	15.8	162	80
077	24.0	16.0	164	81
078	24.3	16.2	166	82
079	24.6	16.4	168	83
080	24.9	16.6	170	84
081	25.2	16.8	172	85
082	25.5	17.0	174	86
083	25.8	17.2	176	87
084	26.1	17.4	178	88
085	26.4	17.6	180	89
086	26.7	17.8	182	90
087	27.0	18.0	184	91
088	27.3	18.2	186	92
089	27.6	18.4	188	93
090	27.9	18.6	190	94
091	28.2	18.8	192	95
092	28.5	19.0	194	96
093	28.8	19.2	196	97
094	29.1	19.4	198	98
095	29.4	19.6	200	99
096	29.7	19.8	202	100
097	30.0	20.0	204	101
098	30.3	20.2	206	102
099	30.6	20.4	208	103
100	30.9	20.6	210	104
101	31.2	20.8	212	105
102	31.5	21.0	214	106
103	31.8	21.2	216	107
104	32.1	21.4	218	108
105	32.4	21.6	220	109
106	32.7	21.8	222	110
107	33.0	22.0	224	111
108	33.3	22.2	226	112
109	33.6	22.4	228	113
110	33.9	22.6	230	114
111	34.2	22.8	232	115
112	34.5	23.0	234	116
113	34.8	23.2	236	117
114	35.1	23.4	238	118
115	35.4	23.6	240	119
116	35.7	23.8	242	120
117	36.0	24.0	244	121
118	36.3	24.2	246	122
119	36.6	24.4	248	123
120	36.9	24.6	250	124
121	37.2	24.8	252	125
122	37.5	25.0	254	126
123	37.8	25.2	256	127
124	38.1	25.4	258	128
125	38.4	25.6	260	129
126	38.7	25.8	262	130
127	39.0	26.0	264	131
128	39.3	26.2	266	132
129	39.6	26.4	268	133
130	39.9	26.6	270	134
131	40.2	26.8	272	135
132	40.5	27.0	274	136
133	40.8	27.2	276	137
134	41.1	27.4	278	138
135	41.4	27.6	280	139
136	41.7	27.8	282	140
137	42.0	28.0	284	141
138	42.3	28.2	286	142
139	42.6	28.4	288	143
140	42.9	28.6	290	144
141	43.2	28.8	292	145
142	43.5	29.0	294	146
143	43.8	29.2	296	147
144	44.1	29.4	298	148
145	44.4	29.6	300	149
146	44.7	29.8	302	150
147	45.0	30.0	304	151
148	45.3	30.2	306	152
149	45.6	30.4	308	153
150	45.9	30.6	310	154
151	46.2	30.8	312	155
152	46.5	31.0	314	156
153	46.8	31.2	316	157
154	47.1	31.4	318	158
155	47.4	31.6	320	159
156	47.7	31.8	322	160
157	48.0	32.0	324	161
158	48.3	32.2	326	162
159	48.6	32.4	328	163
160	48.9	32.6	330	164
161	49.2	32.8	332	165
162	49.5	33.0	334	166
163	49.8	33.2	336	167
164	50.1	33.4	338	168
165	50.4	33.6	340	169
166	50.7	33.8	342	170
167	51.0	34.0	344	171
168	51.3	34.2	346	172
169	51.6	34.4	348	173
170	51.9	34.6	350	174
171	52.2	34.8	352	175
172	52.5	35.0	354	176
173	52.8	35.2	356	177
174	53.1	35.4	358	178
175	53.4	35.6	360	179
176	53.7	35.8	362	180
177	54.0	36.0	364	181
178	54.3	36.2	366	182
179	54.6	36.4	368	183
180	54.9	36.6	370	184
181	55.2	36.8	372	185
182	55.5	37.0	374	186
183	55.8	37.2	376	187
184	56.1	37.4	378	188
185	56.4	37.6	380	189
186	56.7	37.8	382	190
187	57.0	38.0	384	191
188	57.3	38.2	386	192
189	57.6	38.4	388	193
190	57.9	38.6	390	194
191	58.2	38.8	392	195
192	58.5	39.0	394	196
193	58.8	39.2	396	197
194	59.1	39.4	398	198
195	59.4	39.6	400	199
196	59.7	39.8	402	200
197	60.0	40.0	404	201
198	60.3	40.2	406	202
199	60.6	40.4	408	203
200	60.9	40.6	410	204
201	61.2	40.8	412	205
202	61.5	41.0	414	206
203	61.8	41.2	416	207
204	62.1	41.4	418	208
205	62.4	41.6	420	209
206	62.7	41.8	422	210
207	63.0	42.0	424	211
208	63.3	42.2	426	212
209	63.6	42.4	428	213
210	63.9	42.6	430	214
211	64.2	42.8	432	215
212	64.5	43.0	434	216
213	64.8	43.2	436	217
214	65.1	43.4	438	218
215	65.4	43.6	440	219
216	65.7	43.8	442	220
217	66.0	44.0	444	221
218	66.3	44.2	446	222
219	66.6	44.4	448	223
220	66.9	44.6	450	224
221	67.2	44.8	452	225
222	67.5	45.0	454	226
223	67.8	45.2	456	227
224	68.1	45.4	458	228
225	68.4	45.6	460	229
226	68.7	45.8	462	230
227	69.0	46.0	464	231
228	69.3	46.2	466	232
229	69.6	46.4	468	233
230	69.9	46.6	470	234
231	70.2	46.8	472	235
232	70.5	47.0	474	236
233	70.8	47.2	476	237
234	71.1	47.4	478	238
235	71.4	47.6	480	239
236	71.7	47.8	482	240
237	72.0	48.0	484	241
238	72.3	48.2	486	242
239	72.6	48.4	488	243
240	72.9	48.6	490	244
241	73.2	48.8	492	245
242	73.5	49.0	494	246
243	73.8	49.2	496	247
244	74.1	49.4	498	248
245	74.4	49.6	500	249
246	74.7	49.8	502	250
247	75.0	50.0	504	251
248	75.3	50.2	506	252
249	75.6	50.4	508	253
250	75.9	50.6	510	254
251	76.2	50.8	512	255
252	76.5	51.0	514	256
253	76.8	51.2	516	257
254				

Legend

- Schools
- Watercourses
- ▭ Humboldt County APNs
- ▭ Rezone to Multiple Family Residential
- ▭ Zoning RM, RS, R4
- ▭ Zoning RC

**McKinleyville - East
Neighborhood Study Area
Housing Inventory Analysis Parcels
Recommended For Rezoning**

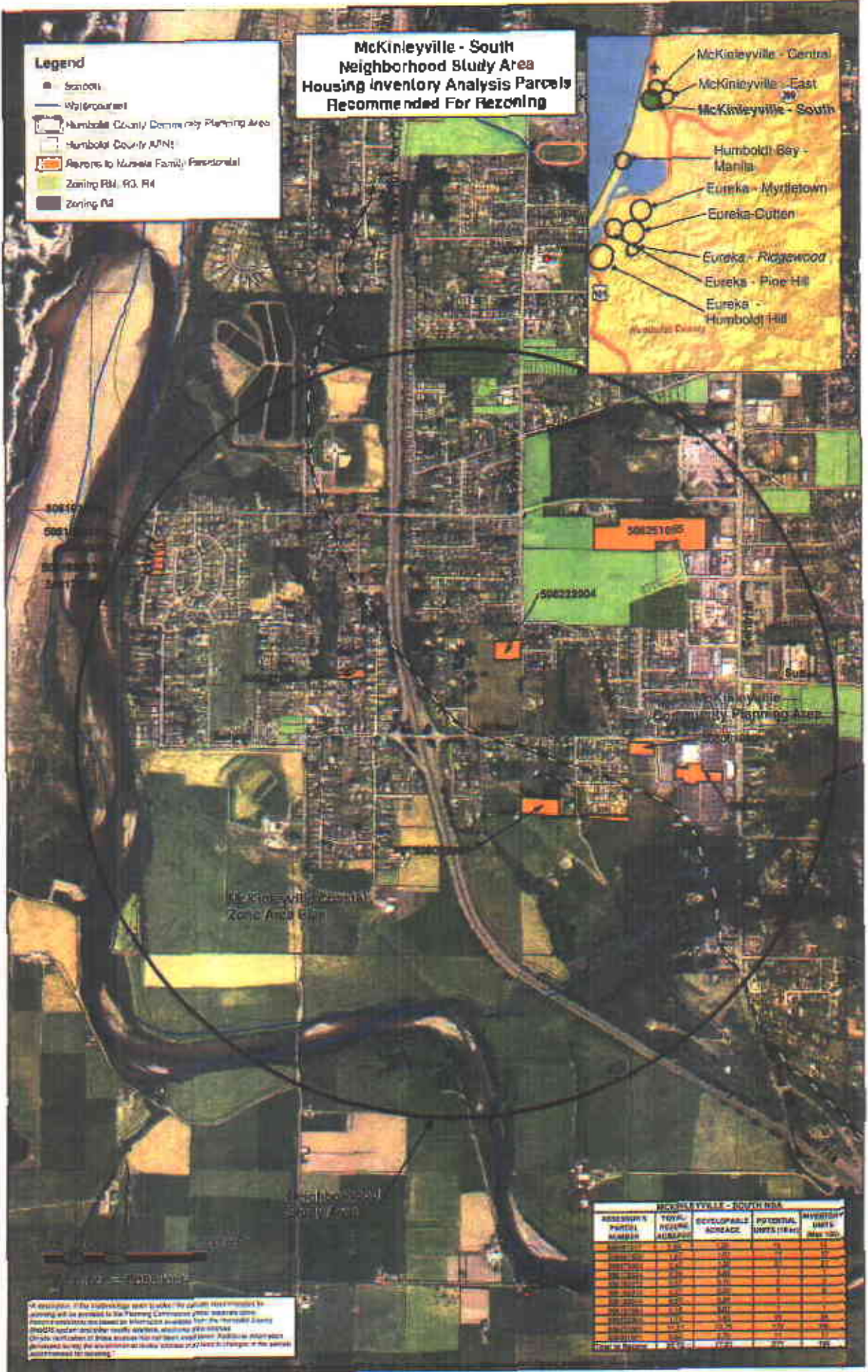


Information of the map was prepared using the data recommended for housing and is provided by the Planning Commission. The data was prepared using the information available from the Humboldt County Planning Commission and other publicly available resources. The data is provided for informational purposes only and does not constitute a recommendation for rezoning.

MCKINLEYVILLE - EAST NSA				
ADDRESSOR'S NAME	TOTAL REZONE ACRES	DEVELOPABLE ACRES	POTENTIAL UNITS (Year)	PROJ. COST (\$/sq. ft.)
101	0.20	0.20	1	10
102	0.20	0.20	1	10
103	0.20	0.20	1	10
104	0.20	0.20	1	10
105	0.20	0.20	1	10
106	0.20	0.20	1	10
107	0.20	0.20	1	10
108	0.20	0.20	1	10
109	0.20	0.20	1	10
110	0.20	0.20	1	10
111	0.20	0.20	1	10
112	0.20	0.20	1	10
113	0.20	0.20	1	10
114	0.20	0.20	1	10
115	0.20	0.20	1	10
116	0.20	0.20	1	10
117	0.20	0.20	1	10
118	0.20	0.20	1	10
119	0.20	0.20	1	10
120	0.20	0.20	1	10
121	0.20	0.20	1	10
122	0.20	0.20	1	10
123	0.20	0.20	1	10
124	0.20	0.20	1	10
125	0.20	0.20	1	10
126	0.20	0.20	1	10
127	0.20	0.20	1	10
128	0.20	0.20	1	10
129	0.20	0.20	1	10
130	0.20	0.20	1	10
131	0.20	0.20	1	10
132	0.20	0.20	1	10
133	0.20	0.20	1	10
134	0.20	0.20	1	10
135	0.20	0.20	1	10
136	0.20	0.20	1	10
137	0.20	0.20	1	10
138	0.20	0.20	1	10
139	0.20	0.20	1	10
140	0.20	0.20	1	10
141	0.20	0.20	1	10
142	0.20	0.20	1	10
143	0.20	0.20	1	10
144	0.20	0.20	1	10
145	0.20	0.20	1	10
146	0.20	0.20	1	10
147	0.20	0.20	1	10
148	0.20	0.20	1	10
149	0.20	0.20	1	10
150	0.20	0.20	1	10
151	0.20	0.20	1	10
152	0.20	0.20	1	10
153	0.20	0.20	1	10
154	0.20	0.20	1	10
155	0.20	0.20	1	10
156	0.20	0.20	1	10
157	0.20	0.20	1	10
158	0.20	0.20	1	10
159	0.20	0.20	1	10
160	0.20	0.20	1	10
161	0.20	0.20	1	10
162	0.20	0.20	1	10
163	0.20	0.20	1	10
164	0.20	0.20	1	10
165	0.20	0.20	1	10
166	0.20	0.20	1	10
167	0.20	0.20	1	10
168	0.20	0.20	1	10
169	0.20	0.20	1	10
170	0.20	0.20	1	10
171	0.20	0.20	1	10
172	0.20	0.20	1	10
173	0.20	0.20	1	10
174	0.20	0.20	1	10
175	0.20	0.20	1	10
176	0.20	0.20	1	10
177	0.20	0.20	1	10
178	0.20	0.20	1	10
179	0.20	0.20	1	10
180	0.20	0.20	1	10
181	0.20	0.20	1	10
182	0.20	0.20	1	10
183	0.20	0.20	1	10
184	0.20	0.20	1	10
185	0.20	0.20	1	10
186	0.20	0.20	1	10
187	0.20	0.20	1	10
188	0.20	0.20	1	10
189	0.20	0.20	1	10
190	0.20	0.20	1	10
191	0.20	0.20	1	10
192	0.20	0.20	1	10
193	0.20	0.20	1	10
194	0.20	0.20	1	10
195	0.20	0.20	1	10
196	0.20	0.20	1	10
197	0.20	0.20	1	10
198	0.20	0.20	1	10
199	0.20	0.20	1	10
200	0.20	0.20	1	10
201	0.20	0.20	1	10
202	0.20	0.20	1	10
203	0.20	0.20	1	10
204	0.20	0.20	1	10
205	0.20	0.20	1	10
206	0.20	0.20	1	10
207	0.20	0.20	1	10
208	0.20	0.20	1	10
209	0.20	0.20	1	10
210	0.20	0.20	1	10
211	0.20	0.20	1	10
212	0.20	0.20	1	10
213	0.20	0.20	1	10
214	0.20	0.20	1	10
215	0.20	0.20	1	10
216	0.20	0.20	1	10
217	0.20	0.20	1	10
218	0.20	0.20	1	10
219	0.20	0.20	1	10
220	0.20	0.20	1	10
221	0.20	0.20	1	10
222	0.20	0.20	1	10
223	0.20	0.20	1	10
224	0.20	0.20	1	10
225	0.20	0.20	1	10
226	0.20	0.20	1	10
227	0.20	0.20	1	10
228	0.20	0.20	1	10
229	0.20	0.20	1	10
230	0.20	0.20	1	10
231	0.20	0.20	1	10
232	0.20	0.20	1	10
233	0.20	0.20	1	10
234	0.20	0.20	1	10
235	0.20	0.20	1	10
236	0.20	0.20	1	10
237	0.20	0.20	1	10
238	0.20	0.20	1	10
239	0.20	0.20	1	10
240	0.20	0.20	1	10
241	0.20	0.20	1	10
242	0.20	0.20	1	10
243	0.20	0.20	1	10
244	0.20	0.20	1	10
245	0.20	0.20	1	10
246	0.20	0.20	1	10
247	0.20	0.20	1	10
248	0.20	0.20	1	10
249	0.20	0.20	1	10
250	0.20	0.20	1	10
251	0.20	0.20	1	10
252	0.20	0.20	1	10
253	0.20	0.20	1	10
254	0.20	0.20	1	10
255	0.20	0.20	1	10
256	0.20	0.20	1	10
257	0.20	0.20	1	10
258	0.20	0.20	1	10
259	0.20	0.20	1	10
260	0.20	0.20	1	10
261	0.20	0.20	1	10
262	0.20	0.20	1	10
263	0.20	0.20	1	10
264	0.20	0.20	1	10
265	0.20	0.20	1	10
266	0.20	0.20	1	10
267	0.20	0.20	1	10
268	0.20	0.20	1	10
269	0.20	0.20	1	10
270	0.20	0.20	1	10
271	0.20	0.20	1	10
272	0.20	0.20	1	10
273	0.20	0.20	1	10
274	0.20	0.20	1	10
275	0.20	0.20	1	10
276	0.20	0.20	1	10
277	0.20	0.20	1	10
278	0.20	0.20	1	10
279	0.20	0.20	1	10
280	0.20	0.20	1	10
281	0.20	0.20	1	10
282	0.20	0.20	1	10
283	0.20	0.20	1	10
284	0.20	0.20	1	10
285	0.20	0.20	1	10
286	0.20	0.20	1	10
287	0.20	0.20	1	10
288	0.20	0.20	1	10
289	0.20	0.20	1	10
290	0.20	0.20	1	10
291	0.20	0.20	1	10
292	0.20	0.20	1	10
293	0.20	0.20	1	10
294	0.20	0.20	1	10
295	0.20	0.20	1	10
296	0.20	0.20	1	10
297	0.20	0.20	1	10
298	0.20	0.20	1	10
299	0.20	0.20	1	10
300	0.20	0.20	1	10
301	0.20	0.20	1	10
302	0.20	0.20	1	10
303	0.20	0.20	1	10
304	0.20	0.20	1	10
305	0.20	0.20	1	10
306	0.20	0.20	1	10
307	0.20	0.20	1	10
308	0.20	0.20	1	10
309	0.20	0.20	1	10
310	0.20	0.20	1	10
311	0.20	0.20	1	10
312	0.20	0.20	1	10
313	0.20	0.20	1	10
314	0.20	0.20	1	10
315	0.20	0.20	1	10
316	0.20	0.20	1	10
317	0.20	0.20	1	10
318	0.20	0.20	1	10
319	0.20	0.20	1	10
320	0.20	0.20	1	10
321	0.20	0.20	1	10
322	0.20	0.20	1	10
323	0.20	0.20	1	10
324	0.20	0.20	1	10
325	0.20	0.20	1	10
326	0.20	0.20	1	10
327	0.20	0.20	1	10
328	0.20	0.20	1	10
329	0.20	0.20	1	10
330	0.20	0.20	1	10
331	0.20	0.20	1	10
332	0.20	0.20	1	10
333	0.20	0.20	1	10
334	0.20	0.20	1	10
335	0.20	0.20	1	10
336	0.20	0.20	1	10
337	0.20	0.20	1	10
338	0.20	0.20	1	10
339	0.20	0.20	1	10
340	0.20	0.20	1	10
341	0.20	0.20	1	10
342	0.20	0.20	1	10
343	0.20	0.20	1	10
344	0.20	0.20	1	10
345	0.20	0.20	1	10
346	0.20	0.20	1	10
347	0.20	0.20	1	10
348	0.20	0.20	1	10
349	0.20	0.20	1	10
350	0.20	0.20	1	10
351	0.20	0.20	1	10
352	0.20	0.20	1	10
353	0.20	0.20	1	10
354	0.20	0.20	1	10
355	0.20	0.20	1	10
356	0.20	0.20	1	10
357	0.20	0.20	1	10
358	0.20	0.20	1	10
359	0.20	0.20	1	10
360	0.20	0.20	1	10
361	0.20	0.20	1	10
362	0.20	0.20	1	10
363	0.20	0.20	1	10
364	0.20	0.20	1	10
365	0.20	0.20	1	10
366	0.20	0.20	1	10

McKinleyville - South Neighborhood Study Area Housing Inventory Analysis Parcels Recommended For Rezoning

- Legend**
- Schools
 - W/Encouraged
 - ▭ Humboldt County Community Planning Area
 - ▭ Humboldt County APNs
 - ▭ Reports to Kusale Family Foundation
 - ▭ Zoning RM, R3, R4
 - ▭ Zoning R4



50610000
50610000
50610000
50610000

MCKINLEYVILLE - SOUTH NDA				
ADDRESS/PARCEL NUMBER	TOTAL ACRES/ACREAGE	DEVELOPABLE ACREAGE	POTENTIAL UNITS (R4)	MAXIMUM UNITS (MAX 100)
50621005	1.00	0.75	10	10
50622004	1.00	0.75	10	10
50623003	1.00	0.75	10	10
50624002	1.00	0.75	10	10
50625001	1.00	0.75	10	10
50626000	1.00	0.75	10	10
50627000	1.00	0.75	10	10
50628000	1.00	0.75	10	10
50629000	1.00	0.75	10	10
50630000	1.00	0.75	10	10
50631000	1.00	0.75	10	10
50632000	1.00	0.75	10	10
50633000	1.00	0.75	10	10
50634000	1.00	0.75	10	10
50635000	1.00	0.75	10	10
50636000	1.00	0.75	10	10
50637000	1.00	0.75	10	10
50638000	1.00	0.75	10	10
50639000	1.00	0.75	10	10
50640000	1.00	0.75	10	10
50641000	1.00	0.75	10	10
50642000	1.00	0.75	10	10
50643000	1.00	0.75	10	10
50644000	1.00	0.75	10	10
50645000	1.00	0.75	10	10
50646000	1.00	0.75	10	10
50647000	1.00	0.75	10	10
50648000	1.00	0.75	10	10
50649000	1.00	0.75	10	10
50650000	1.00	0.75	10	10
50651000	1.00	0.75	10	10
50652000	1.00	0.75	10	10
50653000	1.00	0.75	10	10
50654000	1.00	0.75	10	10
50655000	1.00	0.75	10	10
50656000	1.00	0.75	10	10
50657000	1.00	0.75	10	10
50658000	1.00	0.75	10	10
50659000	1.00	0.75	10	10
50660000	1.00	0.75	10	10
50661000	1.00	0.75	10	10
50662000	1.00	0.75	10	10
50663000	1.00	0.75	10	10
50664000	1.00	0.75	10	10
50665000	1.00	0.75	10	10
50666000	1.00	0.75	10	10
50667000	1.00	0.75	10	10
50668000	1.00	0.75	10	10
50669000	1.00	0.75	10	10
50670000	1.00	0.75	10	10
50671000	1.00	0.75	10	10
50672000	1.00	0.75	10	10
50673000	1.00	0.75	10	10
50674000	1.00	0.75	10	10
50675000	1.00	0.75	10	10
50676000	1.00	0.75	10	10
50677000	1.00	0.75	10	10
50678000	1.00	0.75	10	10
50679000	1.00	0.75	10	10
50680000	1.00	0.75	10	10
50681000	1.00	0.75	10	10
50682000	1.00	0.75	10	10
50683000	1.00	0.75	10	10
50684000	1.00	0.75	10	10
50685000	1.00	0.75	10	10
50686000	1.00	0.75	10	10
50687000	1.00	0.75	10	10
50688000	1.00	0.75	10	10
50689000	1.00	0.75	10	10
50690000	1.00	0.75	10	10
50691000	1.00	0.75	10	10
50692000	1.00	0.75	10	10
50693000	1.00	0.75	10	10
50694000	1.00	0.75	10	10
50695000	1.00	0.75	10	10
50696000	1.00	0.75	10	10
50697000	1.00	0.75	10	10
50698000	1.00	0.75	10	10
50699000	1.00	0.75	10	10
50700000	1.00	0.75	10	10

A description of the information upon which the analysis was prepared for planning will be provided to the Planning Commission prior to their consideration. The data used in this analysis was derived from the Humboldt County GIS and other sources. The information is provided for informational purposes only. The information is not intended to be used for any other purpose. The information is provided for informational purposes only. The information is not intended to be used for any other purpose. The information is provided for informational purposes only. The information is not intended to be used for any other purpose.

Legend

- Schools
- Watercourse
- Humboldt Bay Coastal Zone Area
- Eureka Community Planning Area
- Humboldt County APNs
- House to Multiple Family Residential
- Zoning RM, R3, R4
- Zoning R2
- City of Eureka

**Eureka - Myrtlewood
Neighborhood Study Area
Housing Inventory Analysis Parcels
Recommended For Rezoning**



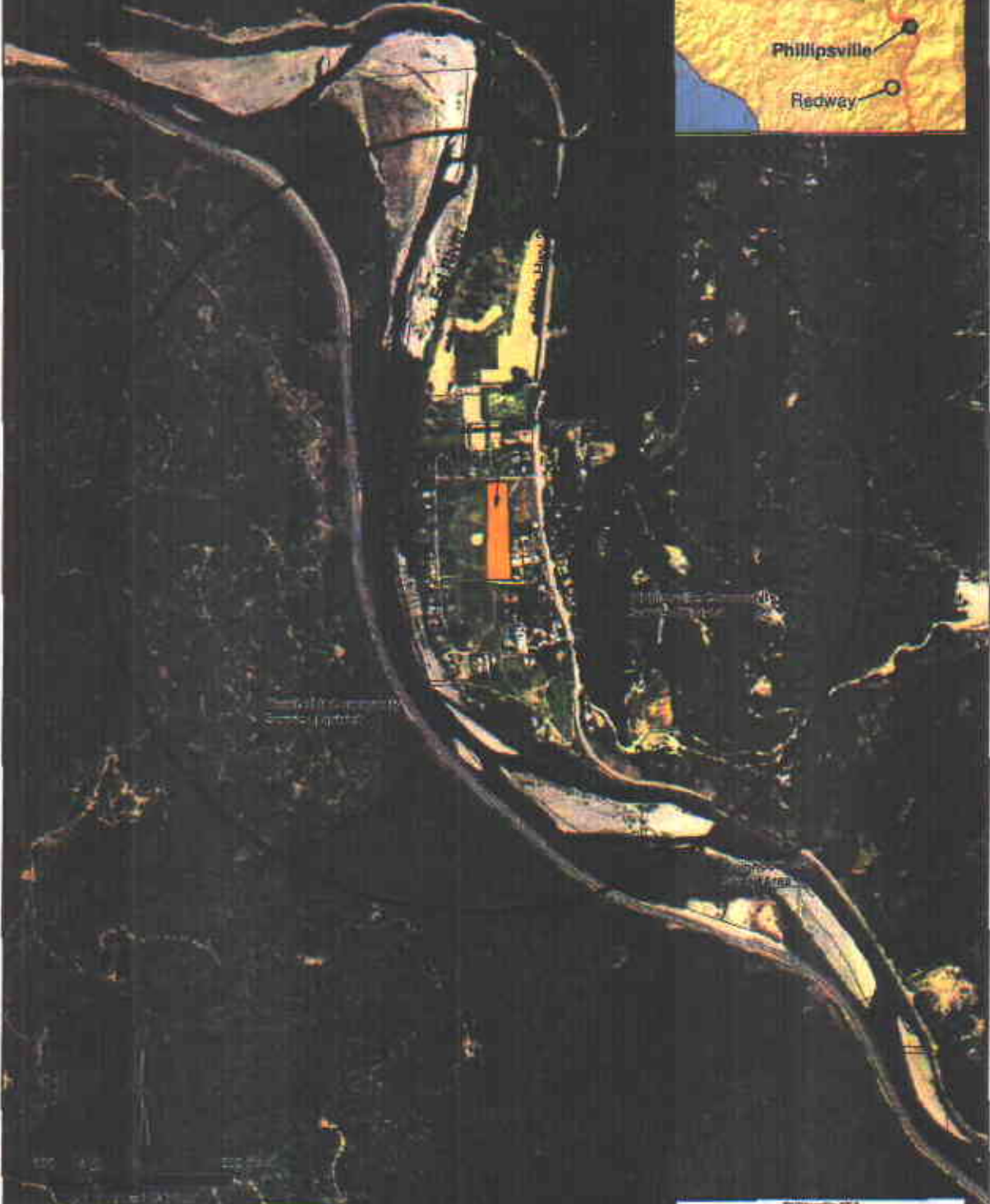
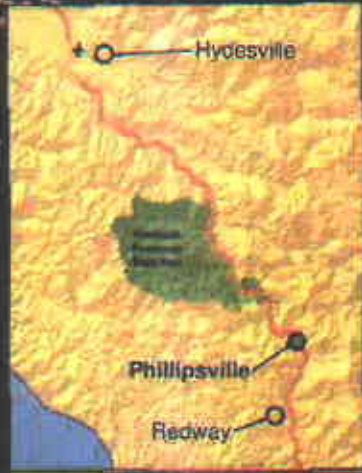
All information on this map is subject to change. The information for rezoning will be provided to the Planning Commission upon adoption of the rezoning ordinance. The information is based on the Humboldt County Assessor's records and is not intended to be used for any other purpose. The City of Eureka is not responsible for any errors or omissions. The City of Eureka is not responsible for any errors or omissions. The City of Eureka is not responsible for any errors or omissions.

EUREKA - MYRTLEWOOD				
PARCELS NUMBER	TOTAL RESIDING ACRES	PERCENTAGE ACRES	PERCENTAGE UNITS	PERCENTAGE UNITS PER ACRE
017022007	0.15	100%	100%	100%
017022008	0.15	100%	100%	100%
017022009	0.15	100%	100%	100%
017022010	0.15	100%	100%	100%
017022011	0.15	100%	100%	100%
017022012	0.15	100%	100%	100%
017022013	0.15	100%	100%	100%
017022014	0.15	100%	100%	100%
017022015	0.15	100%	100%	100%
017022016	0.15	100%	100%	100%
017022017	0.15	100%	100%	100%
017022018	0.15	100%	100%	100%
017022019	0.15	100%	100%	100%
017022020	0.15	100%	100%	100%
017022021	0.15	100%	100%	100%
017022022	0.15	100%	100%	100%
017022023	0.15	100%	100%	100%
017022024	0.15	100%	100%	100%
017022025	0.15	100%	100%	100%
017022026	0.15	100%	100%	100%
017022027	0.15	100%	100%	100%
017022028	0.15	100%	100%	100%
017022029	0.15	100%	100%	100%
017022030	0.15	100%	100%	100%
017022031	0.15	100%	100%	100%
017022032	0.15	100%	100%	100%
017022033	0.15	100%	100%	100%
017022034	0.15	100%	100%	100%
017022035	0.15	100%	100%	100%
017022036	0.15	100%	100%	100%
017022037	0.15	100%	100%	100%
017022038	0.15	100%	100%	100%
017022039	0.15	100%	100%	100%
017022040	0.15	100%	100%	100%
017022041	0.15	100%	100%	100%
017022042	0.15	100%	100%	100%
017022043	0.15	100%	100%	100%
017022044	0.15	100%	100%	100%
017022045	0.15	100%	100%	100%
017022046	0.15	100%	100%	100%
017022047	0.15	100%	100%	100%
017022048	0.15	100%	100%	100%
017022049	0.15	100%	100%	100%
017022050	0.15	100%	100%	100%
017022051	0.15	100%	100%	100%
017022052	0.15	100%	100%	100%
017022053	0.15	100%	100%	100%
017022054	0.15	100%	100%	100%
017022055	0.15	100%	100%	100%
017022056	0.15	100%	100%	100%
017022057	0.15	100%	100%	100%
017022058	0.15	100%	100%	100%
017022059	0.15	100%	100%	100%
017022060	0.15	100%	100%	100%
017022061	0.15	100%	100%	100%
017022062	0.15	100%	100%	100%
017022063	0.15	100%	100%	100%
017022064	0.15	100%	100%	100%
017022065	0.15	100%	100%	100%
017022066	0.15	100%	100%	100%
017022067	0.15	100%	100%	100%
017022068	0.15	100%	100%	100%
017022069	0.15	100%	100%	100%
017022070	0.15	100%	100%	100%
017022071	0.15	100%	100%	100%
017022072	0.15	100%	100%	100%
017022073	0.15	100%	100%	100%
017022074	0.15	100%	100%	100%
017022075	0.15	100%	100%	100%
017022076	0.15	100%	100%	100%
017022077	0.15	100%	100%	100%
017022078	0.15	100%	100%	100%
017022079	0.15	100%	100%	100%
017022080	0.15	100%	100%	100%
017022081	0.15	100%	100%	100%
017022082	0.15	100%	100%	100%
017022083	0.15	100%	100%	100%
017022084	0.15	100%	100%	100%
017022085	0.15	100%	100%	100%
017022086	0.15	100%	100%	100%
017022087	0.15	100%	100%	100%
017022088	0.15	100%	100%	100%
017022089	0.15	100%	100%	100%
017022090	0.15	100%	100%	100%
017022091	0.15	100%	100%	100%
017022092	0.15	100%	100%	100%
017022093	0.15	100%	100%	100%
017022094	0.15	100%	100%	100%
017022095	0.15	100%	100%	100%
017022096	0.15	100%	100%	100%
017022097	0.15	100%	100%	100%
017022098	0.15	100%	100%	100%
017022099	0.15	100%	100%	100%
017022100	0.15	100%	100%	100%

Legend

-  School
-  Phillipsville Community Service District
-  Hillbott County APNs
-  Rezone to Multiple Family Residential
-  Zoning RM, RS, RA
-  Zoning R2

**Phillipsville
Housing Inventory Analysis Parcels
Recommended For Rezoning**



The information in this report was prepared by the Planning Commission for the City of Phillipsville, Oregon. The information is provided for informational purposes only and does not constitute a recommendation or guarantee of any kind. The information is provided as a service to the community and is not intended to be used for any other purpose. The information is provided as a service to the community and is not intended to be used for any other purpose.

Phillipsville NSA				
ADDRESS/FARCEL NUMBER	TOTAL ACRES	REZONABLE ACRES	POTENTIAL UNITS (RM)	POTENTIAL UNITS (RA)
1234567	1.2	1.0	10	20
8765432	2.5	2.0	20	40
3456789	3.8	3.0	30	60
9876543	4.1	3.5	35	70
2109876	5.2	4.5	45	90
6543210	6.3	5.5	55	110
5432109	7.4	6.5	65	130
4321098	8.5	7.5	75	150
3210987	9.6	8.5	85	170
2109876	10.7	9.5	95	190
1098765	11.8	10.5	105	210
9876543	12.9	11.5	115	230
8765432	14.0	12.5	125	250
7654321	15.1	13.5	135	270
6543210	16.2	14.5	145	290
5432109	17.3	15.5	155	310
4321098	18.4	16.5	165	330
3210987	19.5	17.5	175	350
2109876	20.6	18.5	185	370
1098765	21.7	19.5	195	390
9876543	22.8	20.5	205	410
8765432	23.9	21.5	215	430
7654321	25.0	22.5	225	450
6543210	26.1	23.5	235	470
5432109	27.2	24.5	245	490
4321098	28.3	25.5	255	510
3210987	29.4	26.5	265	530
2109876	30.5	27.5	275	550
1098765	31.6	28.5	285	570
9876543	32.7	29.5	295	590
8765432	33.8	30.5	305	610
7654321	34.9	31.5	315	630
6543210	36.0	32.5	325	650
5432109	37.1	33.5	335	670
4321098	38.2	34.5	345	690
3210987	39.3	35.5	355	710
2109876	40.4	36.5	365	730
1098765	41.5	37.5	375	750
9876543	42.6	38.5	385	770
8765432	43.7	39.5	395	790
7654321	44.8	40.5	405	810
6543210	45.9	41.5	415	830
5432109	47.0	42.5	425	850
4321098	48.1	43.5	435	870
3210987	49.2	44.5	445	890
2109876	50.3	45.5	455	910
1098765	51.4	46.5	465	930
9876543	52.5	47.5	475	950
8765432	53.6	48.5	485	970
7654321	54.7	49.5	495	990
6543210	55.8	50.5	505	1010
5432109	56.9	51.5	515	1030
4321098	58.0	52.5	525	1050
3210987	59.1	53.5	535	1070
2109876	60.2	54.5	545	1090
1098765	61.3	55.5	555	1110
9876543	62.4	56.5	565	1130
8765432	63.5	57.5	575	1150
7654321	64.6	58.5	585	1170
6543210	65.7	59.5	595	1190
5432109	66.8	60.5	605	1210
4321098	67.9	61.5	615	1230
3210987	69.0	62.5	625	1250
2109876	70.1	63.5	635	1270
1098765	71.2	64.5	645	1290
9876543	72.3	65.5	655	1310
8765432	73.4	66.5	665	1330
7654321	74.5	67.5	675	1350
6543210	75.6	68.5	685	1370
5432109	76.7	69.5	695	1390
4321098	77.8	70.5	705	1410
3210987	78.9	71.5	715	1430
2109876	80.0	72.5	725	1450
1098765	81.1	73.5	735	1470
9876543	82.2	74.5	745	1490
8765432	83.3	75.5	755	1510
7654321	84.4	76.5	765	1530
6543210	85.5	77.5	775	1550
5432109	86.6	78.5	785	1570
4321098	87.7	79.5	795	1590
3210987	88.8	80.5	805	1610
2109876	89.9	81.5	815	1630
1098765	91.0	82.5	825	1650
9876543	92.1	83.5	835	1670
8765432	93.2	84.5	845	1690
7654321	94.3	85.5	855	1710
6543210	95.4	86.5	865	1730
5432109	96.5	87.5	875	1750
4321098	97.6	88.5	885	1770
3210987	98.7	89.5	895	1790
2109876	99.8	90.5	905	1810
1098765	100.9	91.5	915	1830
9876543	102.0	92.5	925	1850
8765432	103.1	93.5	935	1870
7654321	104.2	94.5	945	1890
6543210	105.3	95.5	955	1910
5432109	106.4	96.5	965	1930
4321098	107.5	97.5	975	1950
3210987	108.6	98.5	985	1970
2109876	109.7	99.5	995	1990
1098765	110.8	100.5	1005	2010
9876543	111.9	101.5	1015	2030
8765432	113.0	102.5	1025	2050
7654321	114.1	103.5	1035	2070
6543210	115.2	104.5	1045	2090
5432109	116.3	105.5	1055	2110
4321098	117.4	106.5	1065	2130
3210987	118.5	107.5	1075	2150
2109876	119.6	108.5	1085	2170
1098765	120.7	109.5	1095	2190
9876543	121.8	110.5	1105	2210
8765432	122.9	111.5	1115	2230
7654321	124.0	112.5	1125	2250
6543210	125.1	113.5	1135	2270
5432109	126.2	114.5	1145	2290
4321098	127.3	115.5	1155	2310
3210987	128.4	116.5	1165	2330
2109876	129.5	117.5	1175	2350
1098765	130.6	118.5	1185	2370
9876543	131.7	119.5	1195	2390
8765432	132.8	120.5	1205	2410
7654321	133.9	121.5	1215	2430
6543210	135.0	122.5	1225	2450
5432109	136.1	123.5	1235	2470
4321098	137.2	124.5	1245	2490
3210987	138.3	125.5	1255	2510
2109876	139.4	126.5	1265	2530
1098765	140.5	127.5	1275	2550
9876543	141.6	128.5	1285	2570
8765432	142.7	129.5	1295	2590
7654321	143.8	130.5	1305	2610
6543210	144.9	131.5	1315	2630
5432109	146.0	132.5	1325	2650
4321098	147.1	133.5	1335	2670
3210987	148.2	134.5	1345	2690
2109876	149.3	135.5	1355	2710
1098765	150.4	136.5	1365	2730
9876543	151.5	137.5	1375	2750
8765432	152.6	138.5	1385	2770
7654321	153.7	139.5	1395	2790
6543210	154.8	140.5	1405	2810
5432109	155.9	141.5	1415	2830
4321098	157.0	142.5	1425	2850
3210987	158.1	143.5	1435	2870
2109876	159.2	144.5	1445	2890
1098765	160.3	145.5	1455	2910
9876543	161.4	146.5	1465	2930
8765432	162.5	147.5	1475	2950
7654321	163.6	148.5	1485	2970
6543210	164.7	149.5	1495	2990
5432109	165.8	150.5	1505	3010
4321098	166.9	151.5	1515	3030
3210987	168.0	152.5	1525	3050
2109876	169.1	153.5	1535	3070
1098765	170.2	154.5	1545	3090
9876543	171.3	155.5	1555	3110
8765432	172.4	156.5	1565	3130
7654321	173.5	157.5	1575	3150
6543210	174.6	158.5	1585	3170
5432109	175.7	159.5	1595	3190
4321098	176.8	160.5	1605	3210
3210987	177.9	161.5	1615	3230
2109876	179.0	162.5	1625	3250
1098765	180.1	163.5	1635	3270
9876543	181.2	164.5	1645	3290
8765432	182.3	165.5	1655	3310
7654321	183.4	166.5	1665	3330
6543210	184.5	167.5	1675	3350
5432109	185.6	168.5	1685	3370
4321098	186.7	169.5	1695	3390
3210987	187.8	170.5	1705	3410
2109876	188.9	171.5	1715	3430
1098765	190.0	172.5	1725	3450
9876543	191.1	173.5	1735	3470
8765432	192.2	174.5	1745	3490
7654321	193.3	175.5	1755	3510
6543210	194.4	176.5	1765	3530
5432109	195.5	177.5	1775	3550
4321098	196.6	178.5	1785	3570
3210987	197.7	179.5	1795	3590
2109876	198.8	180.5	1805	3610
1098765	199.9	181.5	1815	3630
9876543	201.0	182.5	1825	3650
8765432	202.1	183.5	1835	3670
7654321	203.2	184.5	1845	3690
6543210	204.3	185.5	1855	3710
5432109	205.4	186.5	1865	3730
4321098	206.5	187.5	1875	3750
3210987	207.6	188.5	1885	3770
2109876	208.7	189.5	1895	3790
1098765	209.8	190.5	1905	3810
9876543	210.9	191.5	1915	3830
8765432	212.0	192.5	1925	3850
76				

- Legend**
- Schools
 - Watercourse
 - Humboldt Bay Coastal Zone Area Port
 - Eureka Community Planning Area
 - Humboldt County APNs
 - Rezone to Multiple Family Residential
 - Zoning RM, R3, R4
 - Zoning R2
 - City of Eureka

**Eureka - Pine Hill
Neighborhood Study Area
Housing Inventory Analysis Parcels
Recommended For Rezoning**



A description of the following table of parcels is provided in the accompanying report. The parcels are listed in the following table. The parcels are listed in the following table. The parcels are listed in the following table. The parcels are listed in the following table.

PARCEL NUMBER	TOTAL ACRES	DEVELOPABLE ACRES	POTENTIAL UNITS (1/2)	POTENTIAL UNITS (1/4)
01004001	1.00	0.50	10	5
01004002	1.00	0.50	10	5
01004003	1.00	0.50	10	5
01004004	1.00	0.50	10	5
01004005	1.00	0.50	10	5
01004006	1.00	0.50	10	5
01004007	1.00	0.50	10	5
01004008	1.00	0.50	10	5
01004009	1.00	0.50	10	5
01004010	1.00	0.50	10	5
01004011	1.00	0.50	10	5
01004012	1.00	0.50	10	5
01004013	1.00	0.50	10	5
01004014	1.00	0.50	10	5
01004015	1.00	0.50	10	5
01004016	1.00	0.50	10	5
01004017	1.00	0.50	10	5
01004018	1.00	0.50	10	5
01004019	1.00	0.50	10	5
01004020	1.00	0.50	10	5
01004021	1.00	0.50	10	5
01004022	1.00	0.50	10	5
01004023	1.00	0.50	10	5
01004024	1.00	0.50	10	5
01004025	1.00	0.50	10	5
01004026	1.00	0.50	10	5
01004027	1.00	0.50	10	5
01004028	1.00	0.50	10	5
01004029	1.00	0.50	10	5
01004030	1.00	0.50	10	5
01004031	1.00	0.50	10	5
01004032	1.00	0.50	10	5
01004033	1.00	0.50	10	5
01004034	1.00	0.50	10	5
01004035	1.00	0.50	10	5
01004036	1.00	0.50	10	5
01004037	1.00	0.50	10	5
01004038	1.00	0.50	10	5
01004039	1.00	0.50	10	5
01004040	1.00	0.50	10	5
01004041	1.00	0.50	10	5
01004042	1.00	0.50	10	5
01004043	1.00	0.50	10	5
01004044	1.00	0.50	10	5
01004045	1.00	0.50	10	5
01004046	1.00	0.50	10	5
01004047	1.00	0.50	10	5
01004048	1.00	0.50	10	5
01004049	1.00	0.50	10	5
01004050	1.00	0.50	10	5
01004051	1.00	0.50	10	5
01004052	1.00	0.50	10	5
01004053	1.00	0.50	10	5
01004054	1.00	0.50	10	5
01004055	1.00	0.50	10	5
01004056	1.00	0.50	10	5
01004057	1.00	0.50	10	5
01004058	1.00	0.50	10	5
01004059	1.00	0.50	10	5
01004060	1.00	0.50	10	5
01004061	1.00	0.50	10	5
01004062	1.00	0.50	10	5
01004063	1.00	0.50	10	5
01004064	1.00	0.50	10	5
01004065	1.00	0.50	10	5
01004066	1.00	0.50	10	5
01004067	1.00	0.50	10	5
01004068	1.00	0.50	10	5
01004069	1.00	0.50	10	5
01004070	1.00	0.50	10	5
01004071	1.00	0.50	10	5
01004072	1.00	0.50	10	5
01004073	1.00	0.50	10	5
01004074	1.00	0.50	10	5
01004075	1.00	0.50	10	5
01004076	1.00	0.50	10	5
01004077	1.00	0.50	10	5
01004078	1.00	0.50	10	5
01004079	1.00	0.50	10	5
01004080	1.00	0.50	10	5
01004081	1.00	0.50	10	5
01004082	1.00	0.50	10	5
01004083	1.00	0.50	10	5
01004084	1.00	0.50	10	5
01004085	1.00	0.50	10	5
01004086	1.00	0.50	10	5
01004087	1.00	0.50	10	5
01004088	1.00	0.50	10	5
01004089	1.00	0.50	10	5
01004090	1.00	0.50	10	5
01004091	1.00	0.50	10	5
01004092	1.00	0.50	10	5
01004093	1.00	0.50	10	5
01004094	1.00	0.50	10	5
01004095	1.00	0.50	10	5
01004096	1.00	0.50	10	5
01004097	1.00	0.50	10	5
01004098	1.00	0.50	10	5
01004099	1.00	0.50	10	5
01004100	1.00	0.50	10	5
01004101	1.00	0.50	10	5
01004102	1.00	0.50	10	5
01004103	1.00	0.50	10	5
01004104	1.00	0.50	10	5
01004105	1.00	0.50	10	5
01004106	1.00	0.50	10	5
01004107	1.00	0.50	10	5
01004108	1.00	0.50	10	5
01004109	1.00	0.50	10	5
01004110	1.00	0.50	10	5
01004111	1.00	0.50	10	5
01004112	1.00	0.50	10	5
01004113	1.00	0.50	10	5
01004114	1.00	0.50	10	5
01004115	1.00	0.50	10	5
01004116	1.00	0.50	10	5
01004117	1.00	0.50	10	5
01004118	1.00	0.50	10	5
01004119	1.00	0.50	10	5
01004120	1.00	0.50	10	5
01004121	1.00	0.50	10	5
01004122	1.00	0.50	10	5
01004123	1.00	0.50	10	5
01004124	1.00	0.50	10	5
01004125	1.00	0.50	10	5
01004126	1.00	0.50	10	5
01004127	1.00	0.50	10	5
01004128	1.00	0.50	10	5
01004129	1.00	0.50	10	5
01004130	1.00	0.50	10	5
01004131	1.00	0.50	10	5
01004132	1.00	0.50	10	5
01004133	1.00	0.50	10	5
01004134	1.00	0.50	10	5
01004135	1.00	0.50	10	5
01004136	1.00	0.50	10	5
01004137	1.00	0.50	10	5
01004138	1.00	0.50	10	5
01004139	1.00	0.50	10	5
01004140	1.00	0.50	10	5
01004141	1.00	0.50	10	5
01004142	1.00	0.50	10	5
01004143	1.00	0.50	10	5
01004144	1.00	0.50	10	5
01004145	1.00	0.50	10	5
01004146	1.00	0.50	10	5
01004147	1.00	0.50	10	5
01004148	1.00	0.50	10	5
01004149	1.00	0.50	10	5
01004150	1.00	0.50	10	5
01004151	1.00	0.50	10	5
01004152	1.00	0.50	10	5
01004153	1.00	0.50	10	5
01004154	1.00	0.50	10	5
01004155	1.00	0.50	10	5
01004156	1.00	0.50	10	5
01004157	1.00	0.50	10	5
01004158	1.00	0.50	10	5
01004159	1.00	0.50	10	5
01004160	1.00	0.50	10	5
01004161	1.00	0.50	10	5
01004162	1.00	0.50	10	5
01004163	1.00	0.50	10	5
01004164	1.00	0.50	10	5
01004165	1.00	0.50	10	5
01004166	1.00	0.50	10	5
01004167	1.00	0.50	10	5
01004168	1.00	0.50	10	5
01004169	1.00	0.50	10	5
01004170	1.00	0.50	10	5
01004171	1.00	0.50	10	5
01004172	1.00	0.50	10	5
01004173	1.00	0.50	10	5
01004174	1.00	0.50	10	5
01004175	1.00	0.50	10	5
01004176	1.00	0.50	10	5
01004177	1.00	0.50	10	5
01004178	1.00	0.50	10	5
01004179	1.00	0.50	10	5
01004180	1.00	0.50	10	5
01004181	1.00	0.50	10	5
01004182	1.00	0.50	10	5
01004183	1.00	0.50	10	5
01004184	1.00	0.50	10	5
01004185	1.00	0.50	10	5
01004186	1.00	0.50	10	5
01004187	1.00	0.50	10	5
01004188	1.00	0.50	10	5
01004189	1.00	0.50	10	5
01004190	1.00	0.50	10	5
01004191	1.00	0.50	10	5
01004192	1.00	0.50	10	5
01004193	1.00	0.50	10	5
01004194	1.00	0.50	10	5
01004195	1.00	0.50	10	5
01004196	1.00	0.50	10	5
01004197	1.00	0.50	10	5
01004198	1.00	0.50	10	5
01004199	1.00	0.50	10	5
01004200	1.00	0.50	10	5

Legend

- Schools
- Watercourses
- Redway Community Service District
- Redway Community Planning Area
- Humboldt County APNs
- Rezone to Multiple Family Residential
- Zoning RM, RS, R4
- Zoning R2

**Redway
Neighborhood Study Area
Housing Inventory Analysis Parcels
Recommended For Rezoning**



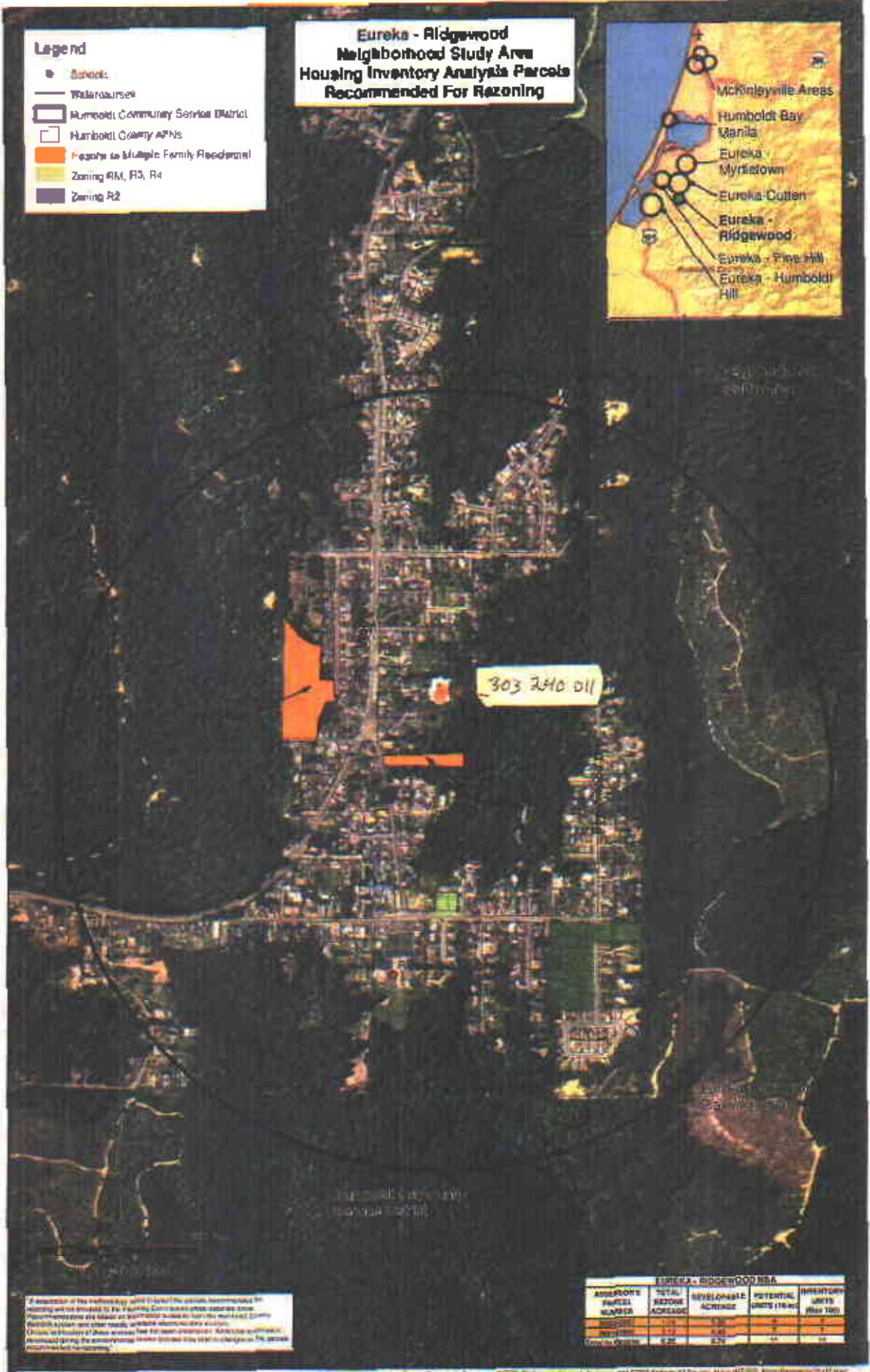
This document is for informational purposes only. It is not intended to be used as a legal document. The information contained herein is based on the best available information and is subject to change without notice. Humboldt County Planning Department
 Humboldt County Planning Department
 2010
 Humboldt County Planning Department
 2010

REDWAY NSA				
APN	TOTAL ACRES	REVELOPABLE ACRES	POTENTIAL UNITS/YEAR	NUMBER UNITS (2010)
077-331-031	1.0	1.0	10	10
077-331-032	1.0	1.0	10	10
077-331-033	1.0	1.0	10	10
077-331-034	1.0	1.0	10	10
077-331-035	1.0	1.0	10	10
077-331-036	1.0	1.0	10	10
077-331-037	1.0	1.0	10	10
077-331-038	1.0	1.0	10	10
077-331-039	1.0	1.0	10	10
077-331-040	1.0	1.0	10	10
077-331-041	1.0	1.0	10	10
077-331-042	1.0	1.0	10	10
077-331-043	1.0	1.0	10	10
077-331-044	1.0	1.0	10	10
077-331-045	1.0	1.0	10	10
077-331-046	1.0	1.0	10	10
077-331-047	1.0	1.0	10	10
077-331-048	1.0	1.0	10	10
077-331-049	1.0	1.0	10	10
077-331-050	1.0	1.0	10	10
077-331-051	1.0	1.0	10	10
077-331-052	1.0	1.0	10	10
077-331-053	1.0	1.0	10	10
077-331-054	1.0	1.0	10	10
077-331-055	1.0	1.0	10	10
077-331-056	1.0	1.0	10	10
077-331-057	1.0	1.0	10	10
077-331-058	1.0	1.0	10	10
077-331-059	1.0	1.0	10	10
077-331-060	1.0	1.0	10	10
077-331-061	1.0	1.0	10	10
077-331-062	1.0	1.0	10	10
077-331-063	1.0	1.0	10	10
077-331-064	1.0	1.0	10	10
077-331-065	1.0	1.0	10	10
077-331-066	1.0	1.0	10	10
077-331-067	1.0	1.0	10	10
077-331-068	1.0	1.0	10	10
077-331-069	1.0	1.0	10	10
077-331-070	1.0	1.0	10	10
077-331-071	1.0	1.0	10	10
077-331-072	1.0	1.0	10	10
077-331-073	1.0	1.0	10	10
077-331-074	1.0	1.0	10	10
077-331-075	1.0	1.0	10	10
077-331-076	1.0	1.0	10	10
077-331-077	1.0	1.0	10	10
077-331-078	1.0	1.0	10	10
077-331-079	1.0	1.0	10	10
077-331-080	1.0	1.0	10	10
077-331-081	1.0	1.0	10	10
077-331-082	1.0	1.0	10	10
077-331-083	1.0	1.0	10	10
077-331-084	1.0	1.0	10	10
077-331-085	1.0	1.0	10	10
077-331-086	1.0	1.0	10	10
077-331-087	1.0	1.0	10	10
077-331-088	1.0	1.0	10	10
077-331-089	1.0	1.0	10	10
077-331-090	1.0	1.0	10	10
077-331-091	1.0	1.0	10	10
077-331-092	1.0	1.0	10	10
077-331-093	1.0	1.0	10	10
077-331-094	1.0	1.0	10	10
077-331-095	1.0	1.0	10	10
077-331-096	1.0	1.0	10	10
077-331-097	1.0	1.0	10	10
077-331-098	1.0	1.0	10	10
077-331-099	1.0	1.0	10	10
077-331-100	1.0	1.0	10	10

Eureka - Ridgewood Neighborhood Study Area Housing Inventory Analysis Parcels Recommended For Rezoning

Legend

- Schools
- Watercourse
- ▭ Humboldt Community Service District
- ▭ Humboldt County APNs
- ▭ Parcels in Multiple Family Residential
- ▭ Zoning RM, R3, R4
- ▭ Zoning R2



A description of the methodology used to select the parcels recommended for rezoning will be provided to the Planning Commission upon request. Some assumptions were made on parcels that do not have Humboldt County APNs or parcels that are not currently zoned for residential use. Checks on history of these parcels will be made during the public hearing process. Assumptions made during the methodology process may vary slightly from the actual methodology assumptions.

EUREKA - RIDGEWOOD NSA				
APPROXIMATE PARCEL NUMBER	TOTAL RESIDE ACRES	REVENUE ACRES	POTENTIAL UNITS (75 AC)	INVENTORY UNITS (Max 100)
10000	1.0	0.0	0	0
20000	1.0	0.0	0	0
30000	1.0	0.0	0	0
40000	1.0	0.0	0	0
50000	1.0	0.0	0	0
60000	1.0	0.0	0	0
70000	1.0	0.0	0	0
80000	1.0	0.0	0	0
90000	1.0	0.0	0	0
100000	1.0	0.0	0	0
110000	1.0	0.0	0	0
120000	1.0	0.0	0	0
130000	1.0	0.0	0	0
140000	1.0	0.0	0	0
150000	1.0	0.0	0	0
160000	1.0	0.0	0	0
170000	1.0	0.0	0	0
180000	1.0	0.0	0	0
190000	1.0	0.0	0	0
200000	1.0	0.0	0	0
210000	1.0	0.0	0	0
220000	1.0	0.0	0	0
230000	1.0	0.0	0	0
240000	1.0	0.0	0	0
250000	1.0	0.0	0	0
260000	1.0	0.0	0	0
270000	1.0	0.0	0	0
280000	1.0	0.0	0	0
290000	1.0	0.0	0	0
300000	1.0	0.0	0	0
310000	1.0	0.0	0	0
320000	1.0	0.0	0	0
330000	1.0	0.0	0	0
340000	1.0	0.0	0	0
350000	1.0	0.0	0	0
360000	1.0	0.0	0	0
370000	1.0	0.0	0	0
380000	1.0	0.0	0	0
390000	1.0	0.0	0	0
400000	1.0	0.0	0	0
410000	1.0	0.0	0	0
420000	1.0	0.0	0	0
430000	1.0	0.0	0	0
440000	1.0	0.0	0	0
450000	1.0	0.0	0	0
460000	1.0	0.0	0	0
470000	1.0	0.0	0	0
480000	1.0	0.0	0	0
490000	1.0	0.0	0	0
500000	1.0	0.0	0	0
510000	1.0	0.0	0	0
520000	1.0	0.0	0	0
530000	1.0	0.0	0	0
540000	1.0	0.0	0	0
550000	1.0	0.0	0	0
560000	1.0	0.0	0	0
570000	1.0	0.0	0	0
580000	1.0	0.0	0	0
590000	1.0	0.0	0	0
600000	1.0	0.0	0	0
610000	1.0	0.0	0	0
620000	1.0	0.0	0	0
630000	1.0	0.0	0	0
640000	1.0	0.0	0	0
650000	1.0	0.0	0	0
660000	1.0	0.0	0	0
670000	1.0	0.0	0	0
680000	1.0	0.0	0	0
690000	1.0	0.0	0	0
700000	1.0	0.0	0	0
710000	1.0	0.0	0	0
720000	1.0	0.0	0	0
730000	1.0	0.0	0	0
740000	1.0	0.0	0	0
750000	1.0	0.0	0	0
760000	1.0	0.0	0	0
770000	1.0	0.0	0	0
780000	1.0	0.0	0	0
790000	1.0	0.0	0	0
800000	1.0	0.0	0	0
810000	1.0	0.0	0	0
820000	1.0	0.0	0	0
830000	1.0	0.0	0	0
840000	1.0	0.0	0	0
850000	1.0	0.0	0	0
860000	1.0	0.0	0	0
870000	1.0	0.0	0	0
880000	1.0	0.0	0	0
890000	1.0	0.0	0	0
900000	1.0	0.0	0	0
910000	1.0	0.0	0	0
920000	1.0	0.0	0	0
930000	1.0	0.0	0	0
940000	1.0	0.0	0	0
950000	1.0	0.0	0	0
960000	1.0	0.0	0	0
970000	1.0	0.0	0	0
980000	1.0	0.0	0	0
990000	1.0	0.0	0	0
1000000	1.0	0.0	0	0