



*Humboldt County
General Plan Update*

*Community Meetings
September 2007*

Introductions



Purpose of the Presentation

Review of General Plan Update (GPU) and Urban Study Area planning as they pertain to:

- land use planning
- the provision of services
- water resources management

Desired Outcomes

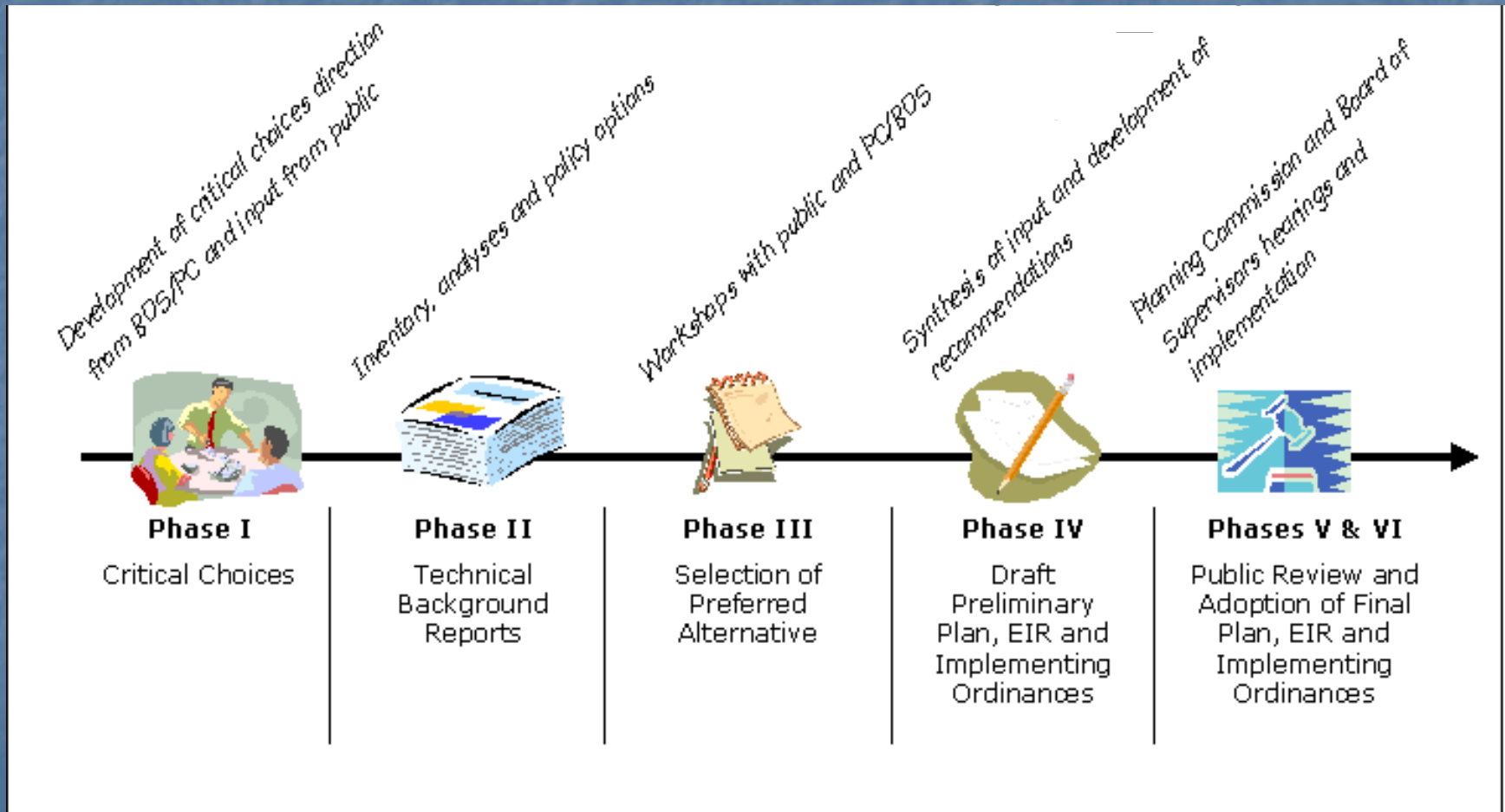
Awareness and Understanding of:

- General Plan Update process
- Proposed land use alternatives
- Community services issues
- Watershed Management planning

The General Plan

- What is a General Plan?
- Why is the General Plan being Updated?
- Why is it important to me?

General Plan Update Process



Overview of Technical Reports

- Building Communities
- Moving Goods and People
- Natural Resources and Hazards
- Forest Resources
- Agricultural Resources
- Capital Improvements/Public Facilities
- Water Resources

Next Steps

Planning Commission Hearings – Draft Preliminary Plan

- Presentation of remaining General Plan Elements to Planning Commission by November '07

Environmental Review

- Draft Environmental Impact Report available for public review in Spring '08

Board of Supervisors Action

- Final Draft General Plan and implementing ordinances complete in Summer '08

Watershed Planning

Integrated Water Resource Planning Involves:

- Moving toward watershed-based planning
- Developing comprehensive land use and watershed data
- Linking land use and water supply planning
- Balancing water supply reliability with habitat preservation

Watershed Planning (Cont.)

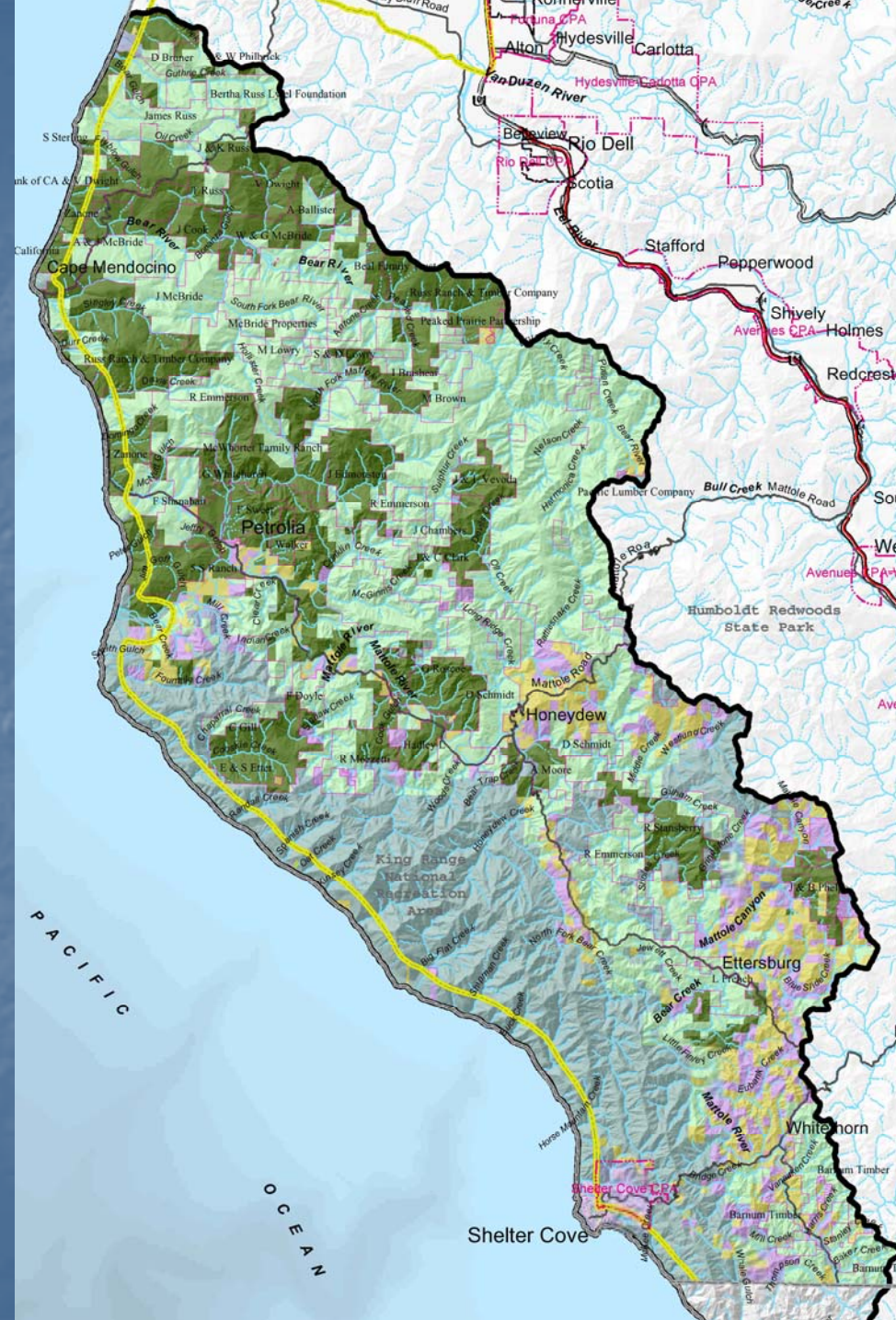
Integrated Water Resource Planning Involves:

- Minimizing water quality impacts from development (such as stormwater, erosion, wastewater disposal)
- Integrating site design and development standards with watershed restoration
- Policies relating to Water Conservation, Reuse, and Recycling
- out-of-watershed transfers and dam re-licensing

Cape Mendocino Watershed

Water Quality Issues:

- Mattole: Temperature & Sediment impairment – 303(d)
- Low summer flows – human water diversions
- Sediment, fisheries habitat, riparian conditions (temperature), and diversions may be similar throughout Planning Area



Methodology for Urban Study Area Analysis

1. Identify and map potential developable areas within Urban Study Areas

2. Generate density ranges and map development potential alternatives for planning sub-areas

3. Determine infrastructure needs and collaborate with service providers to design scalable, and economic construction options

4. Prepare land use maps for General Plan Alternatives A, B and C and evaluate development options and impacts

Community Infrastructure & Services

Water, Wastewater, Fire, Law Enforcement, Roads:

- Standards; Regulations; Level of Service
- Current Capacity and Deficiencies
- Potential for Growth
- Potential Improvements:
 - System Upgrades (Operation/Maintenance & Regulatory)
 - Future Expansion
- Improvement Cost and Timing

Fire Protection

Fire Protection Districts:

- Petrolia FPD
- Telegraph Ridge FPD
- RID #1
- Whitethorn FPD

Volunteer Companies:

- Honeydew VFD

Needs:

- funding
 - consistent source for VFDs
- volunteers, training, equip.



Land Use Alternatives



Input on Challenges & Opportunities

- Watershed implications – Water Supply & Quality
 - Possible water quality improvement projects?
- Maintaining vs. increasing density
 - Any desire to have your land rezoned for more housing in infill areas?
- Cost & Level of Service
 - Any more community infrastructure and service issues in your community?

Questions & Comments

Make comments to the Planning Commission November 15th

Visit the Plan Update webpage to comments or review plan related documents

www.planupdate.org



The screenshot shows a Mozilla Firefox browser window with the title "Humboldt County in the 21st Century-DemoDec2006 - Mozilla Firefox". The address bar displays "http://county-internet/planning/gp/default.asp". The browser's menu bar includes "File", "Edit", "View", "History", "Bookmarks", "Tools", and "Help". The toolbar contains navigation buttons and a search box with "Google" as the search engine. The browser's tab bar shows several open tabs: "Find California Code", "HumCo Planning", "California Code of Regs", "CEQA Guidelines", "Bulletin 155", "California Departmen...", "EPA - Envirofacts - PCS", and "Governor's Office of ...".

The main content area features a large banner image of a coastal landscape with the text "HUMBOLDT 21st Century" in large green letters. Below the banner is the heading "Humboldt County General Plan Update".

The page is divided into two columns:

- OVERVIEW**
 - [What is a General Plan?](#)
 - [What is the Process?](#)
 - [How can you participate?](#)
 - [Timeline for the General Plan Update](#)
 - [What are the General Plan Elements?](#)
- KEY DOCUMENTS**
 - PRELIMINARY HEARING DRAFT GENERAL PLAN:**
 - [Table of Contents](#)
 - [Planning Commission Schedule of Public Hearings and Draft General Plan Documents](#)
 - [Revised Drafts Based on Public Comments](#)
 - [Public Comments](#)
 - BACKGROUND REPORTS:**
 - [General Plan Update Background Reports](#)
 - [Urban Study Areas](#)

At the bottom left, there is a small icon of a computer and a keyboard, followed by the text "ADD ME TO THE GPU E-MAIL LIST".