



**HUMBOLDT COUNTY
DEPARTMENT OF HEALTH & HUMAN SERVICES,
DIVISION OF ENVIRONMENTAL HEALTH
AND THE
CALIFORNIA INTEGRATED WASTE
MANAGEMENT BOARD**

**WASTE TIRE ENFORCEMENT
PROGRAM**

Background

In 1990 the California Legislature enacted comprehensive requirements for the storage and disposal of waste tires. These requirements were intended to address potential fire and health risks posed by the growing number of tire piles in California. As a result of these statutes, the California Integrated Waste Management Board (CIWMB) adopted regulations for the permitting of waste tire facilities.

What Is A "Waste Tire?"

A tire that has been removed from a vehicle and is no longer suitable for its originally intended purpose due to wear, damage or deviation from the manufacturer's specifications. This includes repairable tires, altered waste tires, and scrap tires.

Regulatory Authority: Pursuant to Public Resources Code §42811, the CIWMB is the sole authority for the enforcement of waste tire standards. Recently, the Humboldt County Division of Environmental Health partnered with the CIWMB to enforce waste tire regulations.

The Waste Tire Statutes and Regulations authorize the CIWMB to regulate:

- generators/end-use facilities of waste tires,
- haulers of waste and used tires;
- waste tire facilities, and
- storage and disposal of waste tires.

Waste Tire Manifest Form

The manifest form is a three-copy document. The generator or end use facility should distribute or retain copies of the completed waste tire manifest form as follows:

- White* (top copy) - send to CIWMB in the pre-addressed, postage paid self-mailer within 90 days of tire pickup by hauler.
- Pink* (middle copy) – retain at generator or end use facility for at least 3 years.
- Yellow* (bottom copy) – give to hauler, who must retain for 3 years at place of business.

Are you a "waste tire generator" or end-use facility? Generators/end-use facilities of waste tires must comply with these regulations:

- contract with registered waste tire haulers;
- obtain a Tire Program ID # from CIWMB (call 866-896-0600) for *each* location where used/waste tires are generated or accepted;
- complete waste tire manifests for each load;
- send the *white* copy of the completed manifest form to CIWMB and,
- keep the *pink* manifest copy for 3 years.

Do you need to register as a "waste or used tire hauler"? If you ever haul ten or more waste or used tires, you must register annually with the CIWMB and obtain a Tire Program ID # (see phone number above). You must also:

- post a \$10,000 bond;
- keep in your possession a completed waste tire manifest and trip log while transporting waste or used tires ;
- leave proper copies of the manifest form with the generators and end-use facilities;
- transport waste tires to a permitted landfill, waste tire facility or authorized facility;
- keep the *yellow* manifest copy for 3 years.



Official Waste/Used Tire Hauler Sticker which is affixed to lower right corner of the windshield.

Are you a "waste tire facility"?

A location (other than a landfill) which accumulates waste tires for disposal, processing, resale or storage is a waste tire facility. Storage of >500 waste or used tires requires a permit. Waste Tire Facilities are required to comply with the specific storage standards outlined below.

Recordkeeping Requirements:

- possess an Operation Plan;
- maintain a copy of the Emergency Response Plan at the facility; and,
- retain records on site for 3 years and make them available for inspection.

Fire Prevention Measures include:

- keep communication equipment on site;
- keep fire control equipment on site; and
- maintain an adequate water supply.



Tire fire at an improperly maintained storage facility. Photo provided courtesy of The Daily Herald (Everett, WA) and Photographer Jim Leo.

The local fire authority may determine that other measures are necessary to meet the intent of the regulations for fire control, and protection of life and property.

Facility Access and Site Security

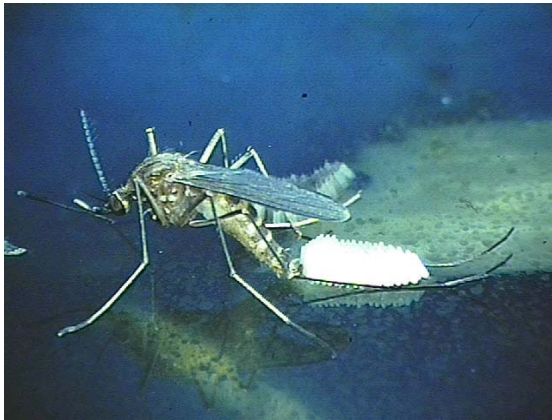
- keep signs clearly posted;
- keep an attendant present;
- maintain the access road; and,
- control unauthorized access.

Vector Control

Store waste tires so that the breeding and harborage of mosquitoes, rodents and other vectors is prevented by:

- covering with impermeable barriers; and,
- using treatments/methods to eliminate vector breeding as approved by the Humboldt County Division of Environmental Health.

Contact Brent Whitener, Humboldt County Vector Control Officer at 707-268-2203 or brent.whitener@co.humboldt.ca.us



Culex mosquito, West Nile Virus vector, laying eggs. Photo provided courtesy of Center for Disease Control

Guidelines for Safe Storage of Waste Tires

Waste tire storage units shall:

- not exceed 5,000 square ft of contiguous area, 50,000 cubic feet in volume or 10 feet in height;
- not exceed 6 feet in height when stored within 20 feet of any property line; and,
- not be located within 10 feet of property lines.

- Have surface water drainage directed around and away from storage areas.
- Have tires removed from rims immediately upon arrival at the facility.

Waste tire piles shall be:

- located at least 40 feet away from vegetation and other flammable or combustible materials; and,
- maintained with accessible fire lanes between storage units. Access to fire lanes must be kept unobstructed at all times.

The site shall be designed and constructed to protect bodies of water from pyrolytic oil resulting from a potential fire.

Additionally, **new waste tire facilities** shall:

- not be located in a 100-year flood plain unless movement of waste tires off site can be adequately controlled; and
- not be located on sites with grades or other physical features that will interfere with fire fighting equipment or personnel unless approved by the local fire authority or a registered fire safety engineer.

Indoor Storage

Storage shall meet or exceed conditions in *The Standards for Storage of Rubber Tires*, National Fire Protection Association, 231d-1989 Edition.

Penalties for Violating the Law

Penalties will be assessed for violation of Waste Tire Laws including:

- operating a waste tire facility without a facility permit;
- failing to use waste tire manifests and trip logs;
- failing to follow reporting requirements;
- using an unregistered hauler; and,
- hauling >9 used or waste tires without a hauler registration.

PENALTY TABLE

Unregistered Hauler Violation	10-20 Tires/Load	21-40 Tires/Load	41-100 Tires/Load	>101 Tires/Load
1 st Offense	\$100-\$500	\$500-\$750	\$500-\$1000	\$1000-\$2000
2 nd Offense	\$500-\$1000	\$750-\$1250	\$1000-\$1750	\$2000-\$4000
3 rd + Offense	\$1000-\$1750	\$1250-\$2000	\$1750-\$2750	\$3000-\$5000

For information regarding the **California Waste Tire Hauler Registration Program** contact:

**CA Integrated Waste Management Board
Waste Tire Permitting
& Enforcement Section**

On-line program information is available at:

<http://www.ciwmb.ca.gov/tires>

Toll-free Phone Number: 1 (866) 896 – 0600

*Brochure production supported by the
California Integrated Waste Management Board
ZERO WASTE- You make it happen!*