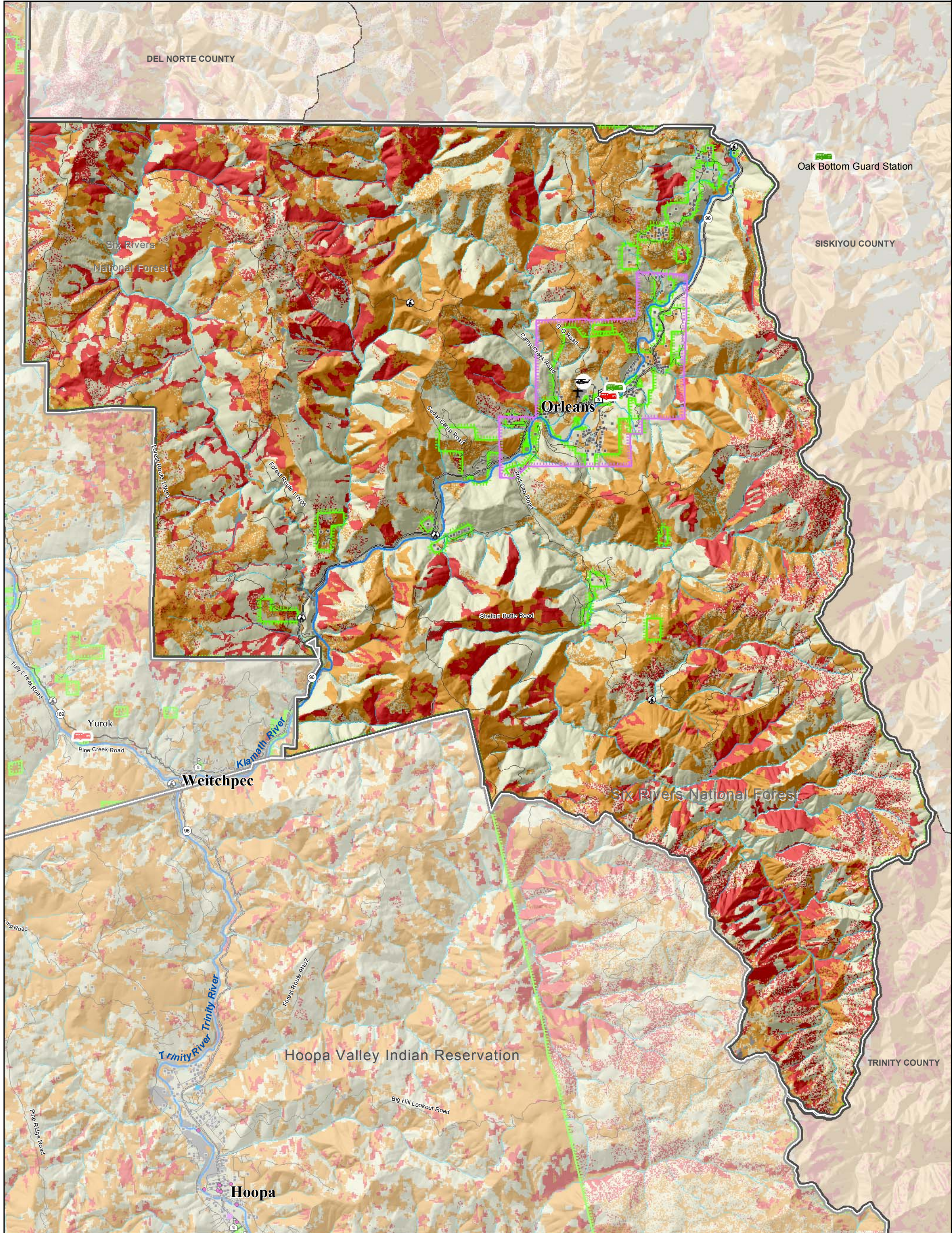


Fig. 3.12 East Klamath Fire Planning Compartment



Map Location

Legend

- RAMS Compartments
- Emergency Response**
- Local Fire Station
- Six Rivers Fire Station
- Highways and Roads**
- State HWY
- HWY or Secondary Road
- Local Road or Street

Airports

- Landing Strip
- Helicopter Landing

Hospitals and Clinics

- Hospital

Lookout, Lights, Radio

- Lookout Tower
- Light Tower
- Radio Tower

Public Facilities

- Public Lands
- School

Infrastructure

- Regulator Station
- Water Tank or Source
- Historic Locations
- Cities
- Community Planning Area

Private Land Ownership

- Commercial or Industrial
- Approx. Structure Location

Hydrography

- Major River or Stream
- Perennial Stream
- Intermittent Stream

Fuel Hazard Rank

- No Data
- Moderate
- High
- Very High

Scale: 0 to 8 Miles

RF 1:115,000

Local Fire Response, land ownership, and infrastructure data has been compiled by HCCDS. RAMS Planning Compartments were compiled by RNB. Fuel Hazard Rank (2004) from CDF FRAP is based on expected fire behavior for unique combinations of topography and vegetative fuels under a given severe weather condition (wind speed, humidity, and temperature).

This map is intended for planning purposes and should not be used for precise measurement or navigation.

Map compiled by Humboldt County Community Development Services (HCCDS), July 2004. Contact: cdevis@co.humboldt.ca.us