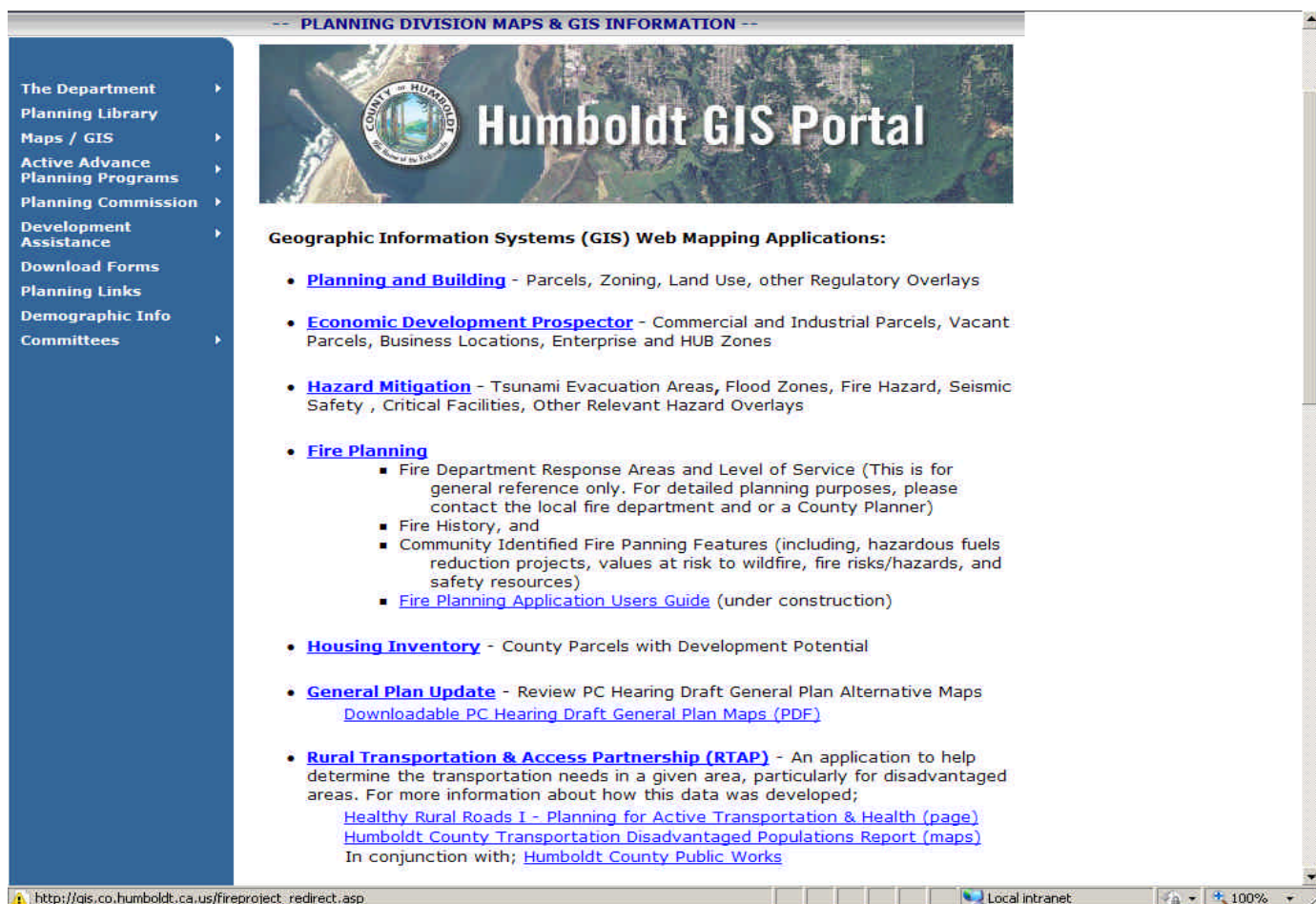


# Humboldt County GIS Portal User Guide

This document explains how to use the Humboldt County GIS Portal to access fire planning features, including the updated fuel hazard reduction projects that are the focus of this document. To access the Portal, go to [www.humboldtGISportal.com](http://www.humboldtGISportal.com) and choose 'Fire Planning' from the list of mapping applications.



-- PLANNING DIVISION MAPS & GIS INFORMATION --

**The Department** ▶  
**Planning Library** ▶  
**Maps / GIS** ▶  
**Active Advance Planning Programs** ▶  
**Planning Commission** ▶  
**Development Assistance** ▶  
**Download Forms** ▶  
**Planning Links** ▶  
**Demographic Info Committees** ▶

**Humboldt GIS Portal**

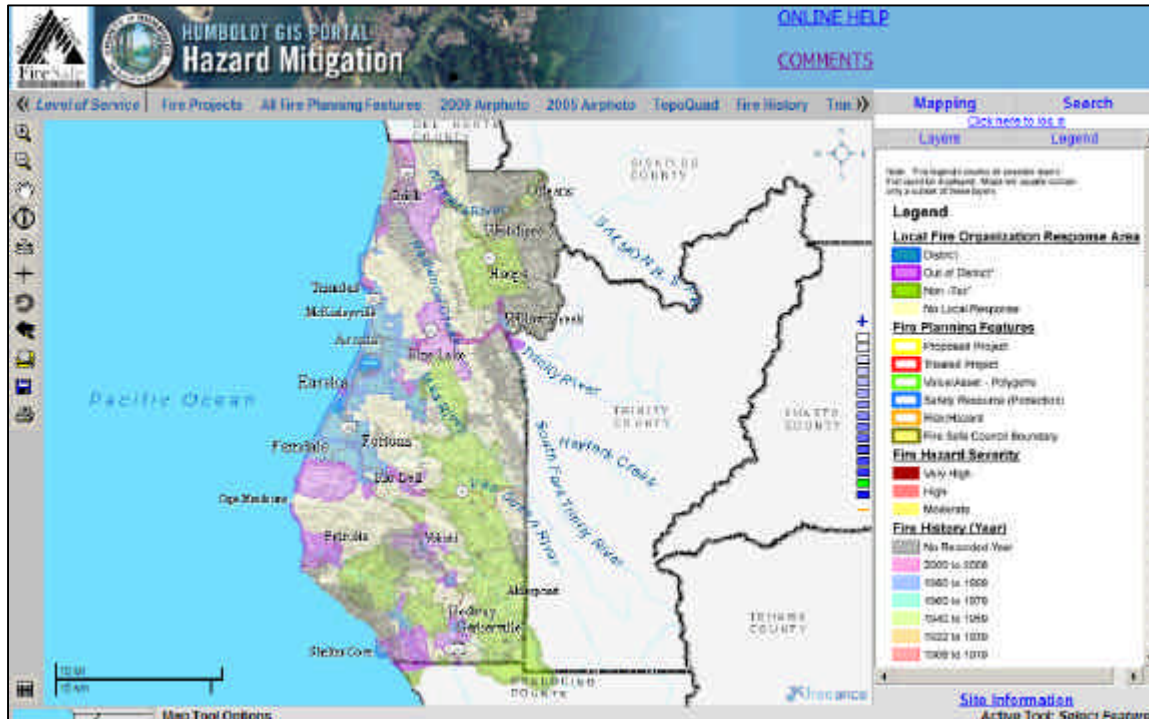
**Geographic Information Systems (GIS) Web Mapping Applications:**

- **Planning and Building** - Parcels, Zoning, Land Use, other Regulatory Overlays
- **Economic Development Prospector** - Commercial and Industrial Parcels, Vacant Parcels, Business Locations, Enterprise and HUB Zones
- **Hazard Mitigation** - Tsunami Evacuation Areas, Flood Zones, Fire Hazard, Seismic Safety, Critical Facilities, Other Relevant Hazard Overlays
- **Fire Planning**
  - Fire Department Response Areas and Level of Service (This is for general reference only. For detailed planning purposes, please contact the local fire department and or a County Planner)
  - Fire History, and
  - Community Identified Fire Panning Features (including, hazardous fuels reduction projects, values at risk to wildfire, fire risks/hazards, and safety resources)
  - [Fire Planning Application Users Guide](#) (under construction)
- **Housing Inventory** - County Parcels with Development Potential
- **General Plan Update** - Review PC Hearing Draft General Plan Alternative Maps  
[Downloadable PC Hearing Draft General Plan Maps \(PDF\)](#)
- **Rural Transportation & Access Partnership (RTAP)** - An application to help determine the transportation needs in a given area, particularly for disadvantaged areas. For more information about how this data was developed;  
[Healthy Rural Roads I - Planning for Active Transportation & Health \(page\)](#)  
[Humboldt County Transportation Disadvantaged Populations Report \(maps\)](#)  
In conjunction with; [Humboldt County Public Works](#)

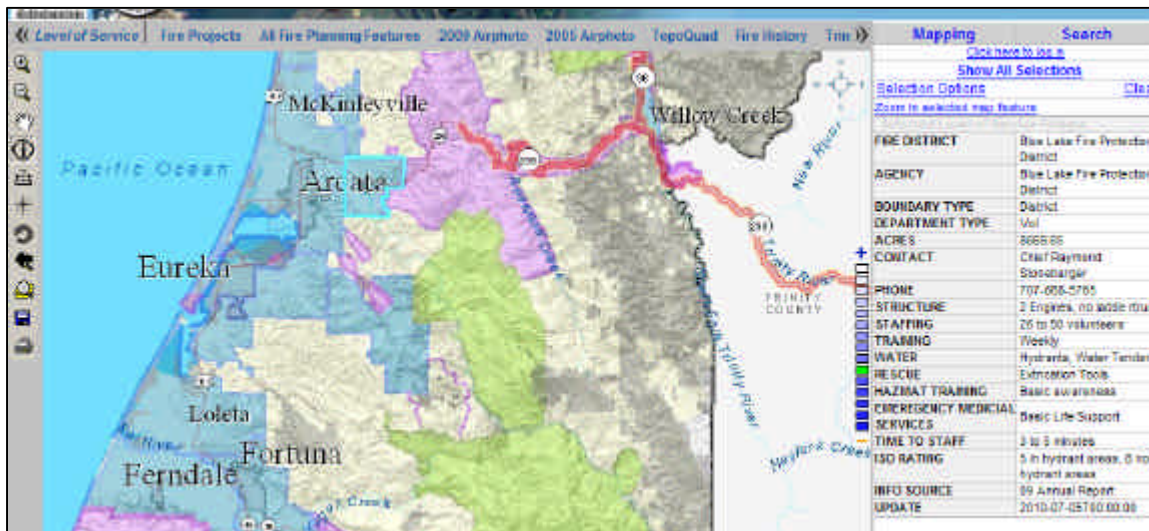
http://gis.co.humboldt.ca.us/fireproject\_redirect.asp Local intranet 100%

## LEVEL OF SERVICE

Once you are on in the fire planning Portal you will see a map displaying the whole county surrounded by various tools and a legend as shown below. Directly above the map is a bar with tabs that can be selected to display various layers of information. Moving from left to right, the first tab is labeled 'Level of Service' and is associated with the features initially displayed on the countywide map when you first enter the Portal. This layer provides information on fire service response areas and current levels of serves.



If you select the 'Identify Features' tool located on the bar to the left of the map (the letter "i" with a circle around it) you can left click on one of the blue, purple, or green polygons and the program will outline the selection in light blue and retrieve information about the fire department that provides service to the area. The information will be displayed to the right of the map as shown below.



## LAYER CONTROL WITHIN THE PORTAL

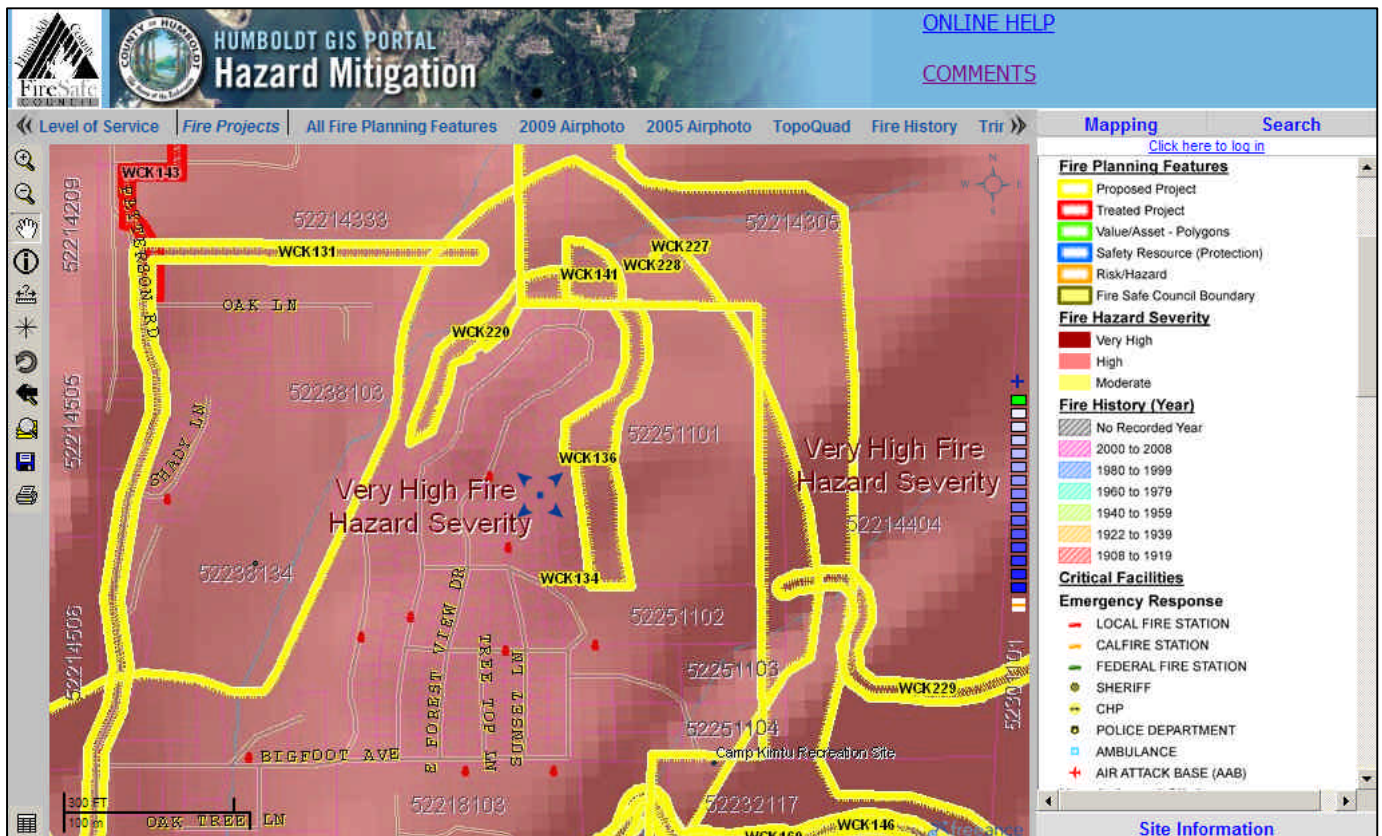
The map features displayed for each tab above the map are preset and include map layers specific to the topic implied by the title. If you would prefer to look only at one layer or different combinations of layers, the desired layers must be selected manually. In the upper right-hand corner of the screen, you will see 'Mapping' and directly underneath you will see 'Layers.' Select 'Layers' and a window to the right of the map will allow you to select and de-select layers of your choosing.

The screenshot displays the Humboldt GIS Portal Hazard Mitigation interface. The main map area shows a topographic map with various colored overlays representing different hazard mitigation zones. Key features include:

- Map Labels:** Briceland, Briceland VFD Response Area, Beginning Fire Station #1, Redway Fire Station, CALIFORNIA HIGHWAY PATROL, Garberville Fire Station, Garberville Sheriff, Benbow, and Sprawl Creek.
- Map Tools:** A vertical toolbar on the left side of the map.
- Scale:** A scale bar at the bottom left showing 2000 FT and 1000 m.
- Map Tool Options:** A text box at the bottom left explaining the current cursor mode: "The current cursor mode is set to 'Pan / Recenter'. Clicking on the map directly will adjust the center of the map to the point clicked. Dragging on the map will shift the extent of the entire map."
- Navigation:** A small inset map at the bottom left showing the location of the main map area within a larger region.
- Header:** "HUMBOLDT GIS PORTAL Hazard Mitigation" and "ONLINE HELP" and "COMMENTS" links.
- Right Panel:** A "Mapping" tab is active, with a "Search" button and a "Click here to log in" link. Below these are buttons for "Layer Control", "Feature Selection Manager", "Markup Tools", and "Map Bookmarks".
- Bottom Right:** "Site Information" and "Active Tool: Pan / Recenter" are displayed.
- Status Bar:** "Local intranet" and "100%" are shown at the bottom right.

## HOW TO VIEW FUELS REDUCTION PROJECTS

To view the layer containing the fuels reduction projects, move one tab over from the left of 'Level of Service' to 'Fire Projects' and left click. The program will retrieve the map displaying community identified fuels reduction projects. Make sure that you are in zoom mode by selecting the 'zoom In' tool (magnifying glass with the plus sign) from the bar to the left of the map. Use your mouse to draw a square around any specific area you would like to zoom in to. The program will retrieve a zoomed in version of the area you select. As you zoom in, more and more details will begin to emerge including parcel lines, stream and road names, and project polygons.



## HOW TO VIEW PROJECT INFORMATION

Now that you have zoomed into your desired area of the county, you can begin looking at the project information collected at Community meetings by selecting the 'Identify Features' tool located on the bar to the left of the map (the letter "i" with a circle around it). Make sure that the 'Map Layer' selected in the lower right hand corner is 'Projects/Treated Projects'. Then draw a square around the project polygon and the information will appear in a box to the right of the map and the selected project will be outlined in light blue. There are two ways to clear the blue highlight around the selected feature. Press "Clear" at the top right of the Selected Map Feature Information. Or, Click "Show all Selections" where all selected features will be listed, then click the eraser next to the project id.

**HUMBOLDT GIS PORTAL**  
**Hazard Mitigation**

ONLINE HELP  
 COMMENTS

Level of Service | Fire Projects | All Fire Planning Features | 2009 Airphoto | 2005 Airphoto | TopoQuad | Fire History | Trir

Grizzly Creek  
 BRD029  
 Grizzly Creek Redwoods State Park

High Fire Hazard Severity

Van Duzen River

Blue Bluffs

Very High Fire Hazard Severity

Wéonime Flat

BRD020

BRD023

Rogers Creek

Swains Flat

Bar W Ranch

BRD088

Pepperwood Falls

Pip Creek

Selected Projects	Treated Projects Feature
MAP ID	BRD023
FEATURE TYPE	Project
FEATURE SUBTYPE	fuel reduction
FEATURE DESCRIPTION	fuel reduction along Swains Flat & Hwy 36
FEATURE LOCATION	Swains Flat Community
PROJECT TYPE	Landscape
PROJECT PRIORITY	
PROJECT CATEGORY	Update
PROJECT STATUS	Initiated
YEAR	2007
TREATMENT TYPE	
VEGETATION TYPE	
MAINTENANCE SCHEDULE	
FUNDING SOURCE	
ACRES	
LATITUDE	40.4726
LONGITUDE	-123.875

Map Tool Options

The current cursor mode is set to 'Select/Identify'. Click on a map feature to select it. Clicking on a map feature that has already been selected will unselect. Dragging on the map will create a window that selects multiple features. Use the drag select for better accuracy when selecting points. The selectable theme can be set to the right.

Map Layer: Projects / Treated Projects

Mode: Polygon [Select] [Clear]

Site Information  
 Active Tool: Select Feature

Done Local intranet 100%

## HOW TO SEARCH FOR INFORMATION

An alternative to the 'Identify Features' tool to display project information is the Search function. Select 'Search' on the upper right hand corner of the screen and click on 'Search by Fire Project'. Use the dropdown menus to select 'Feature Location' and 'Feature Type' and run a search. All projects associated with that location will appear in a list below the map. Click on the link associated with the project you would like to view and the system will retrieve a map, automatically zooming in on the selected feature and outlining it in light blue.

The screenshot displays the Humboldt GIS Portal Hazard Mitigation interface. The map shows Willow Creek with various fire hazard severity zones: 'Very High Fire Hazard Severity' (red) and 'High Fire Hazard Severity' (orange). A specific project, WCK137, is highlighted with a light blue outline. The interface includes a search panel on the right with the following settings:

- Search by Fire Project
- Search by Location & Project Type:
- Feature Location: WILLOW CREEK
- Feature Type: Treated Project

Below the map is a table of search results:

MAP ID	FEATURE TYPE	FEATURE SUBTYPE	FEATURE DESCRIPTION	FEATURE LOCATION	PROJECT TYPE	PROJECT PRIORITY	PROJECT CATEGORY	PROJECT STATUS	YEAR	TREATMENT TYPE	VEGETATION TYPE	MAINTAINENCE SCHEDULE	FUNDING SOURCE	ACRES	L
8	WCK137	Treated Project	fuel reduction	Remove Brush behind business south side of 299 - Biomass	Downtown Willow Creek (South Side)	Landscape	New	Treated	2009.0	Biomass Removal	Brush	Evaluate yearly	WCFSC - HumCo Sheriff	2.5	4

## HELPFUL HINTS

- Don't be discouraged if you get lost at first. Just play around with the functions for a while and through trial and error and a bit of practice anyone can make this tool work for them. Be patient with yourself as well as the program. If you get lost you can always "Refresh" the page by pressing the Refresh button or F5 button. This will bring you back to the beginning and all selections will clear.
- Use the small map in the bottom left-hand corner to select different areas in Humboldt County. You will need to 'left-click' on desired area and hold while selecting area. If you want to go back to the initial map, outline the entire County.
- It takes the computer a long time to load the aerial photography. For faster processing time, select the map layers you would like to view, let them load and select the aerial photo last. If the aerial photo is unnecessary for your research, do not use the aerial photo layer. This should speed up your processing time.
- If you would like to provide comments or updated information on projects or other features, click on '[COMMENTS](#)' at the top of the screen and fill in appropriate fields.
- You can save your settings by creating a login. On the upper right hand corner click on "Click here to log in." This will create a profile where you can preserve the status of the page until you login again in the future.
- For general information and help regarding the Humboldt County GIS online mapping, please visit: <http://gis.co.humboldt.ca.us/onlinehelp/> or if you are already on the site, by clicking on '[ONLINE HELP](#)' at the top of the screen.
  - If you're still stuck, please contact one of the following:  
Cybelle Immitt, at (707) 268-3736 or [cimmitt@co.humboldt.ca.us](mailto:cimmitt@co.humboldt.ca.us),  
Jerry von Dohlen, at (707) 268-3776 or [jvondohlen@co.humboldt.ca.us](mailto:jvondohlen@co.humboldt.ca.us).