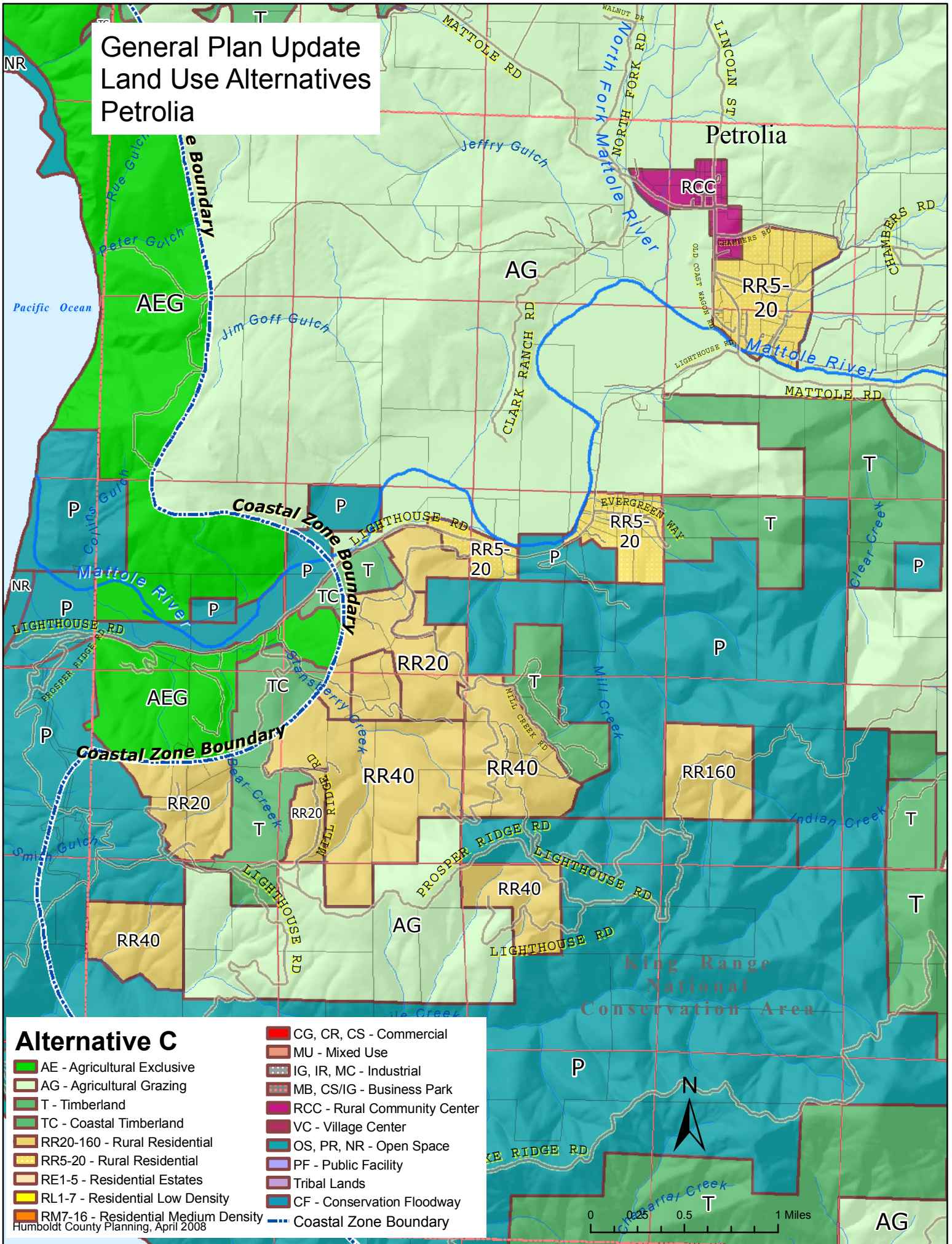
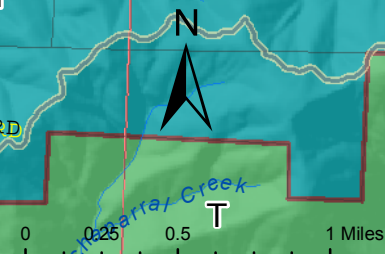


General Plan Update Land Use Alternatives Petrolia



Alternative C

- | | |
|---|--|
| ■ AE - Agricultural Exclusive | ■ CG, CR, CS - Commercial |
| ■ AG - Agricultural Grazing | ■ MU - Mixed Use |
| ■ T - Timberland | ■ IG, IR, MC - Industrial |
| ■ TC - Coastal Timberland | ■ MB, CS/IG - Business Park |
| ■ RR20-160 - Rural Residential | ■ RCC - Rural Community Center |
| ■ RR5-20 - Rural Residential | ■ VC - Village Center |
| ■ RE1-5 - Residential Estates | ■ OS, PR, NR - Open Space |
| ■ RL1-7 - Residential Low Density | ■ PF - Public Facility |
| ■ RM7-16 - Residential Medium Density | ■ Tribal Lands |
| | ■ CF - Conservation Floodway |
| | — Coastal Zone Boundary |



Humboldt County Planning, April 2008